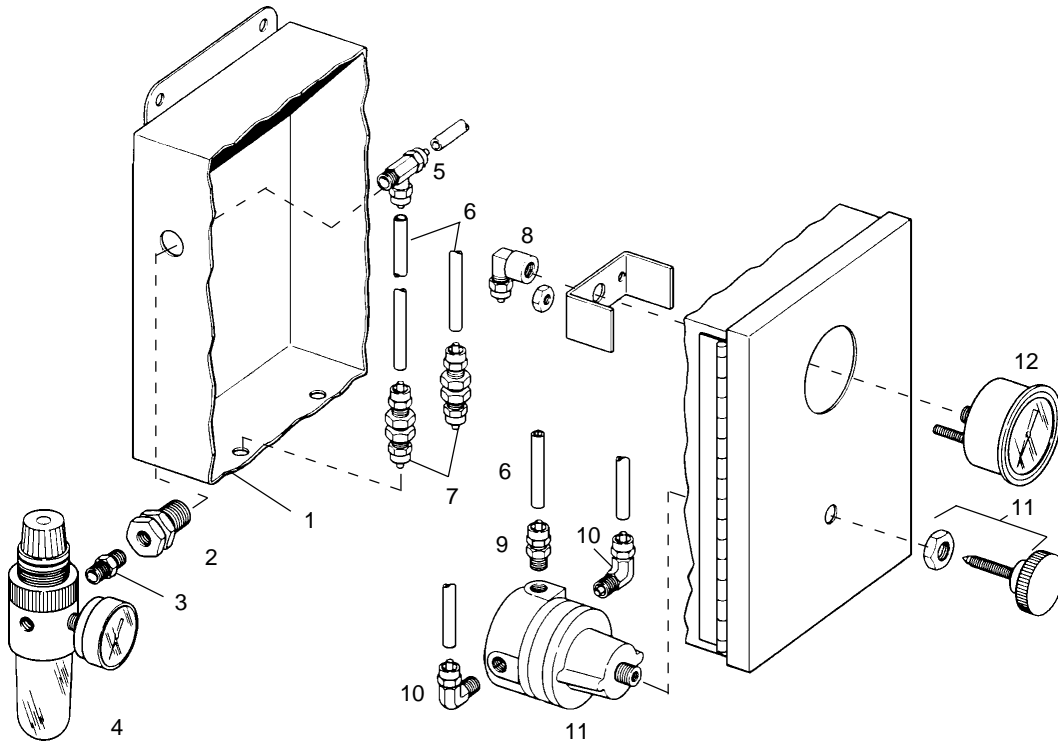


Parts list

48-354 Air Regulator Control Box

All orders for repair must contain the following data.

1. Complete model number (from nameplate).
2. Serial number (from nameplate).
3. Key number and description from the parts list.



KEY	DESCRIPTION	PART NO	QTY
1	Enclosure (8" x 6" x 3 1/2")	48-354-1	1
2	Bulkhead Adapter	42A15-62	1
3	Hex Nipple	42A15-33	1
4	Air Filter and Regulator	33-68	1
5	Tee	42A16-16	1
6*	Poly-Flo Tubing	41-6	33 Ft.
7	Bulkhead Union	42A16-9	2
8	Elbow	42A16-25	1
9	Connector	42A16-7	1
10	Elbow	42A16-12	2
11	Pressure Regulator	33-67	1
12	Pressure Gauge	54-19	1
13**	Connector (1/4 P.F. to 1/4 N.P.T.)	42A16-8CP	1
14**	Quick Coupler	37-6	1

* 3 Ft. Poly-Flo allowed for internal hook-up. 3-10 Ft. allowed for connections to controller and valve.

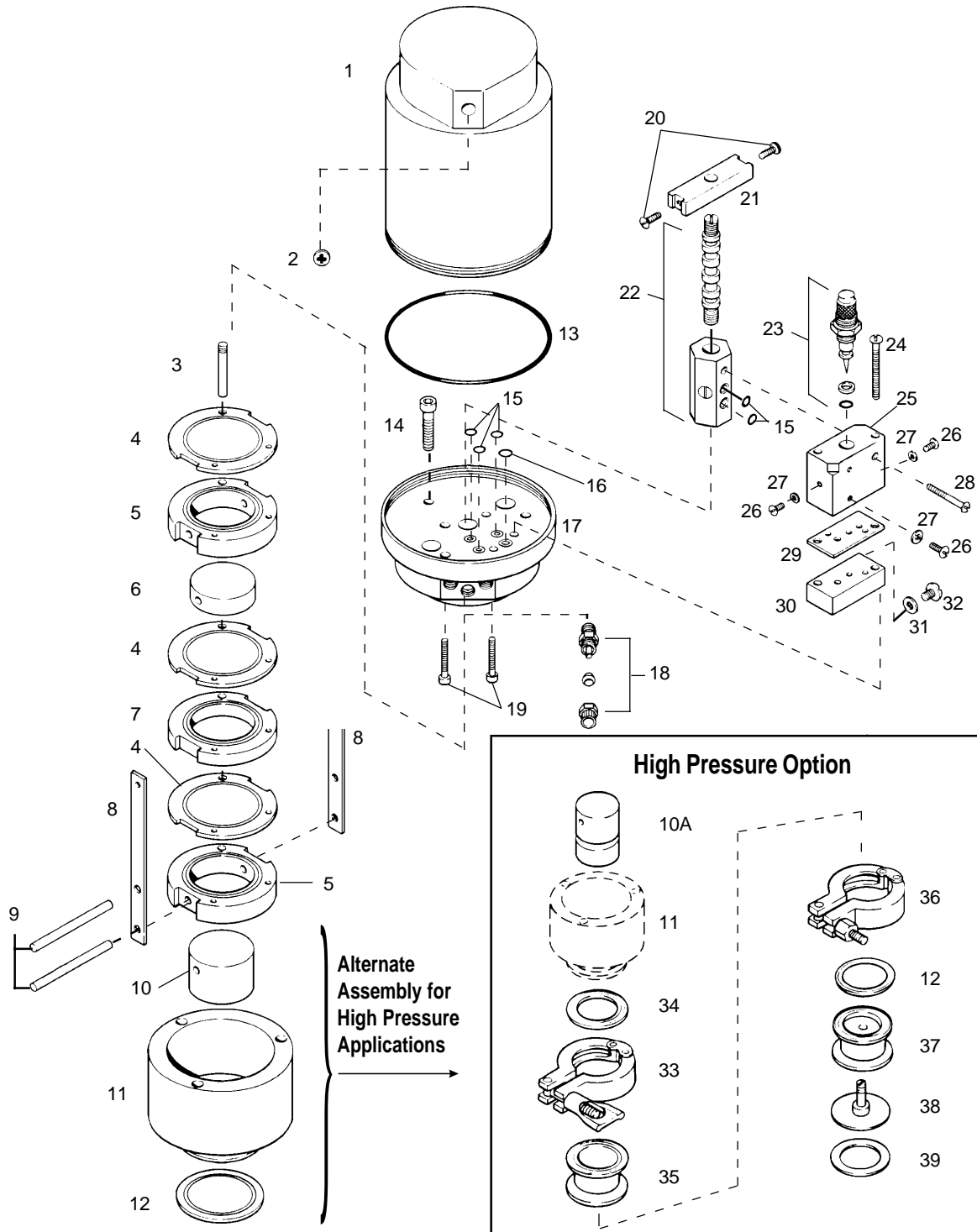
** Items 13 and 14 not shown. They are for hook-up to the valve.

Parts list

30-90 Pressure Controller 30-90HP High Pressure Option

All orders for repair must contain the following data.

1. Complete model number (from nameplate).
2. Serial number (from nameplate).
3. Key number and description from the parts list.



Parts List

30-90 Pressure Controller

KEY	DESCRIPTION	PART NO	QTY
1	Cover	25-361-210-01	1
2	Plug	10C-1-99-S	1
3	Pin	9-209	1
4	Gasket	17-213	3
5	Spacer	24-40-2	2
6	Disc	36-70	1
7	Spacer	24-40-3	1
8	Clevis Leg	10-200	2
9	Pin	9-210	2
10	Disc	36-71	1
11	Body	7-667	1
12	Gasket	17-162A	1
13	O-ring	10CPLO-3-73-1A	1
14	Screw, Sockethead	SC1114E-SS	3
15	O-ring	62-1-34	5
16	O-ring	17-63	1
17	Base	1-12	1
18	Poly-Flo Fitting	42A16-7	3
19	Screw	SC710E-SS	4
20	Screw, Trusshead	14-88	2
21	Clevis Bar	10-206	1
22	Air Valve Assembly	63-2-3	1
23	Metering Valve	63-3	1
24	Screw, Roundhead	SC718R-SS	2
25	Reversible Control Block	54-46	1
26	Screw, Trusshead	SC703Y-SS	3
27	Washer	15-149	3
28	Screw, Roundhead	SC711R-SS	1
29	Gasket	17-214	1
30	Air Distribution Block	54-45	1
31	Washer	15-148	1
32	Screw	SC1203R-SS	1

30-90HP High Pressure Option

KEY	DESCRIPTION	PART NO	QTY
10A	Disc (Replaces #10)	36-79	1
12	Diaphragm	17-162A	1
33	Clamp	13MHHM-2-5	1
34	Gasket	40MP-4-2	1
35	Spacer	17EMP-2-1-5	1
36	Clamp	16-136	1
37	Base 1-22	1	
38	Diaphragm	35B14	1
39	Gasket	17A188	1