

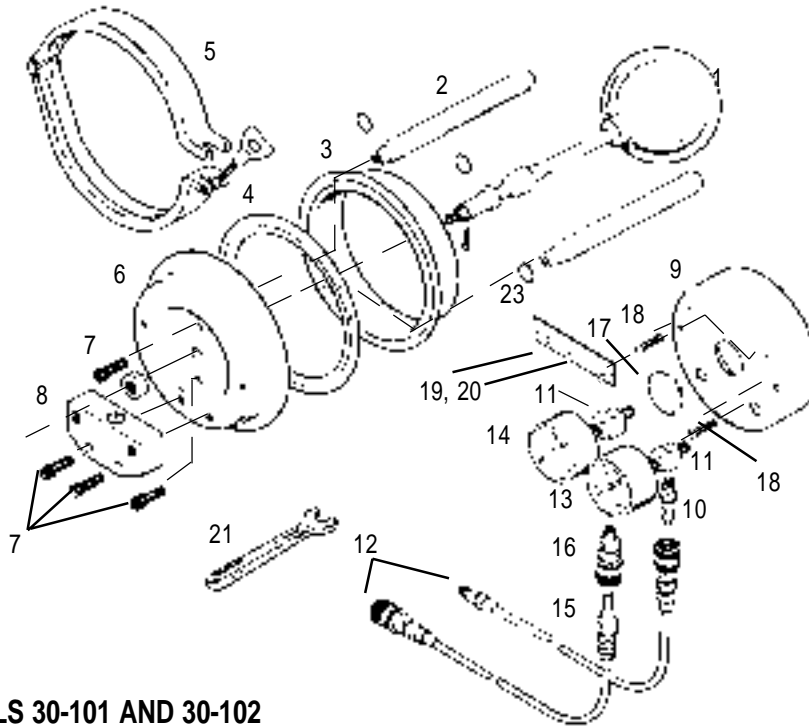
# PARTS LIST

## MODELS 30-101, 30-102 AND MODELS 30-103 AND 30-104

All orders for repair parts must contain the following data.

1. Complete model number (located on nameplate).
2. Control serial number (located on nameplate).
3. Description and part key number from the parts list.

The following exploded views and accompanying parts list facilitate ordering repair parts from the factory. All parts of the control are exploded and keyed to the parts list.

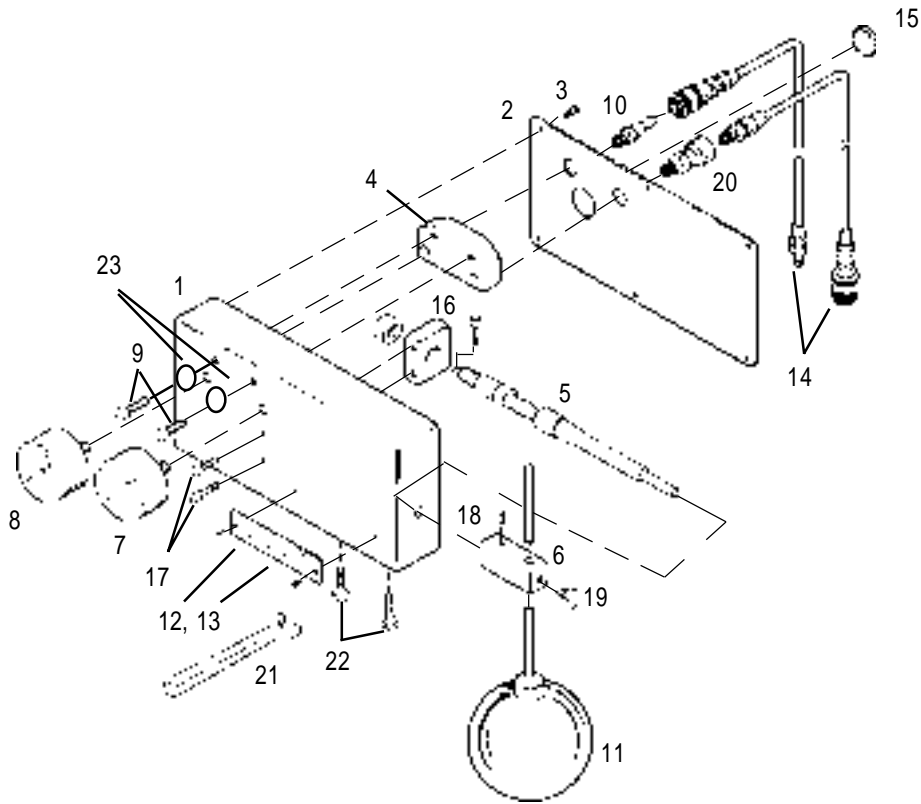


### MODELS 30-101 AND 30-102

KEY	DESCRIPTION	PART NO	QUANTITY
1	Ball Float and Float Arm Assembly	55-4-316	1
2	Limit Stop Pin	9-12-316	2
3	Ferrule	L14AM7-4-316L	1
4	Gasket	40MP-U-4	1
5	Clamp	13MHHM-4-S	1
6	Cap - Special 4 inch	32-481-316	1
7	Screw, Socket Head Cap	14-16	4
8	Air Pilot Assembly	54-2	1
9	Cover	23-3-S	1
10	Plug - Coupler	25-361-210-06-S	1
11	Tee - Street	42-15-58CP	2
12	Hose Assembly - Air	41-10-4'	2
13	Gauge - Valve, 0-60 PSI	54-53-VM	1
14	Gauge - Supply, 0-60 PSI	54-53-SM	1
15	Plug - Coupler	37-19	1
16	Body - Coupler	37-91	1
17	Plug - Hole	13-28	1
18	Screw - Truss Head	14-46	2
19	Label	38-273	1
20	Label	38-274	1
21	Wrench	07-1152	1

# PARTS LIST

## MODELS 30-103 AND 30-104



KEY	DESCRIPTION	PARTS NO	QUANTITY
1	Housing Assembly (Used on Model 30-103)	44-195-01	1
1	Housing Assembly (Used on Model 30-104)	44-93-01	1
2	Cover (Used on Model 30-103)	44-195-02	1
2	Cover (Used on Model 30-104)	44-93-02	1
3	Screw	14-103	6
4	Air Pilot Assembly	54-41	1
5	Flexible Shaft	19-123	1
6	Float Adapter	37-17A-316L	1
7	Gauge - Valve, 0-60 PSI	54-53-VM	1
8	Gauge - Valve, 0-60 PSI	54-53-SM	1
9	Screw	SC1309H-SS	2
10	Adapter - Air Coupler	25-361-210-06-S	1
11	Float and Rod Assembly	55-2-316	1
12	Label	38-273	1
13	Label	38-274	1
14	Hose Assembly - Air	41-10-4	2
15	Plug - Hose	13-28	1
16	Support - Flexible Shaft	10-208	1
17	Screw	14-88	2
18	Set Screw	SC1303A-SS	1
19	Thumbscrew	14-119	1
20	Connector	42-7	1
21	Wrench	07-1152	1
22	Screw - Hex Head	SC1108H-SS	2
23	Washer	WA1300-SS	2