

PARTS LIST

ORDERING INFORMATION

All orders for repair parts must contain the following:

1. Complete model number (located on nameplate).
2. Pump serial number (located on nameplate).
3. Description and part key number from the parts list.

The exploded view and parts key facilitate ordering repair parts from Tri-Clover. All parts for the CL pump are keyed to the parts list.

KEY #	DESCRIPTION	QTY	KEY #	DESCRIPTION	QTY
1	Casing	1	25	Spacing Ring	1
2	Impeller	1	26	Stationary Seal, Rear	1
3	Cover	1	27	O-ring, Stationary Seal	1
4	Impeller Screw	1	28	Stuffing Box (Type EG)	1
1 5	O-ring	1, 2 or 3	29	Adapter	1
3 6	Wingnut	6 or 8	30	Screw, Motor	4
3 7	Stud, Casing / Cover	6 or 8	31	Washer, Motor	4
8	Cover O-ring	1	32	Seal Guard	1
9	Screw, Seal Gland	4	33	Screw, Seal Guard	1
10	Seal Gland	1	34	Stub Shaft	1
11	Gasket	2	35	Compression Ring, Threaded	1
12	Stationary Seal	1	36	Compression Ring	1
4 13	Nut, Casing / Adapter	2 or 4	37	Screw, Compression Ring	6
4 14	Washer, Casing / Adapter	2 or 4	5 38	Washer, Compression Ring, Seal Gland	6
2 15	Rotating Seal	1 or 2	39	Pin, Stub Shaft	4
16	Spring	1	40	Retaining Ring, Stub Shaft	1
17	Drive Collar	1	7 41	Leg Bracket	1
18	Drive Collar, Stainless Steel	1	42	Screw, Leg Bracket	2
19	Pin, Drive Collar	1	43	Washer, Leg Bracket	4
20	O-ring, Stuffing Box	1	44	Set Screw, Adjustable Leg	4
21	Single Flush Lip Seal	1	45	Adjustable Leg	4
22	Stuffing Box (Type FG)	1	6 46	Motor	4
23	Screw, Stuffing Box	2	47	Stuffing Box (John Crane)	1
24	Flush Pipe	2	48	John Crane Double 8 Seal	1

- 1 O-ring requirements:
 Impeller - 1 o-ring (CL4311, 6410 - use key #49, 1 o-ring)
 Type DG Seal - 1 o-ring
 Type FG Seal - 2 o-rings
 Type EG Seal - 2 o-rings

2 EG Seal requires two Rotating Seals.

3 CL4311 and CL6410 require 8 wing nuts and studs.

4 CL4311 and CL6410 require 4 nuts and 4 washers.

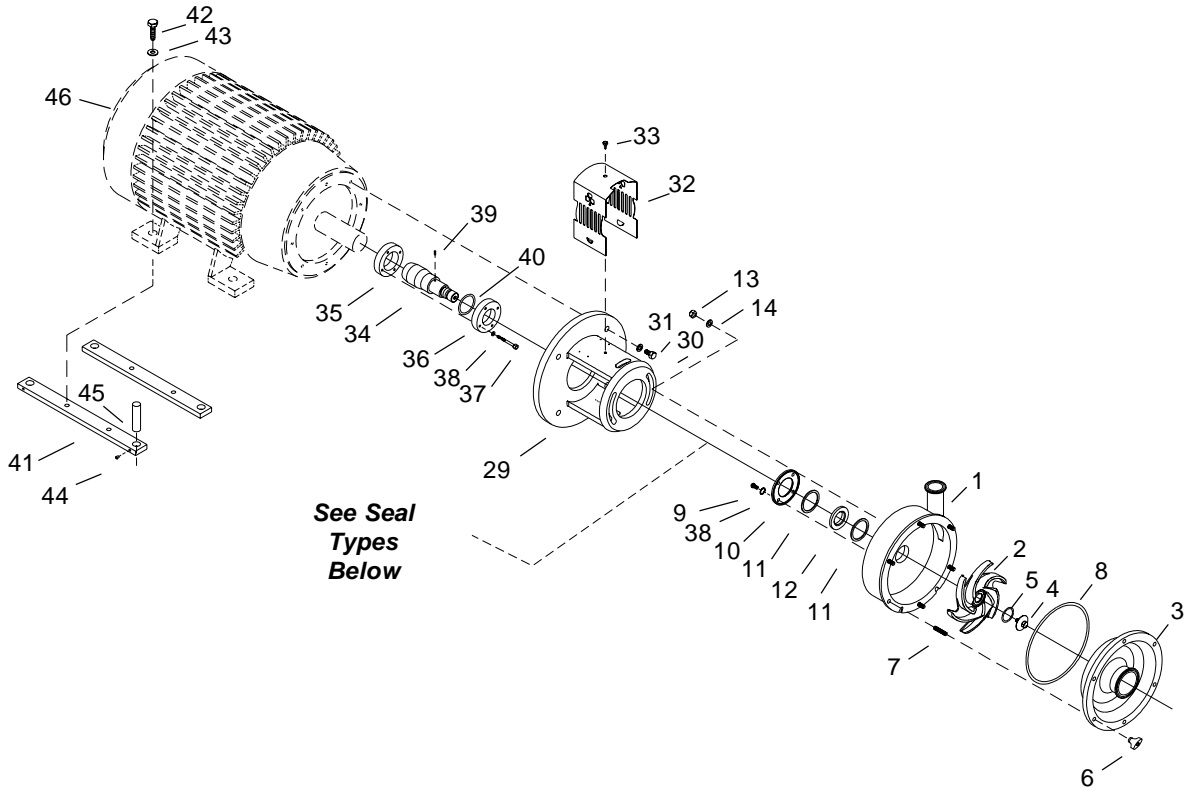
5 CL4311 and CL6410 do not require a washer for the seal gland.

6 CL4311 pumps with frame size 320 and larger use motors with special Duplex thrust bearings. Contact your local Tri-Clover distributor or Tri-Clover for more information.

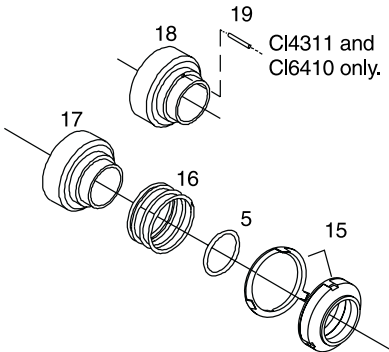
7 Required on 1½ and 2 horsepower motors only.

EXPLODED VIEW

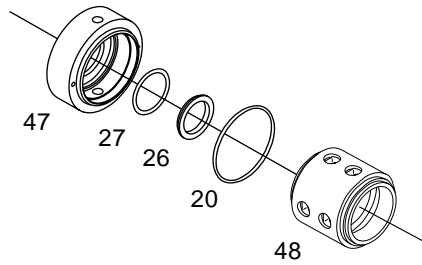
FOR ALL CL SERIES PUMPS



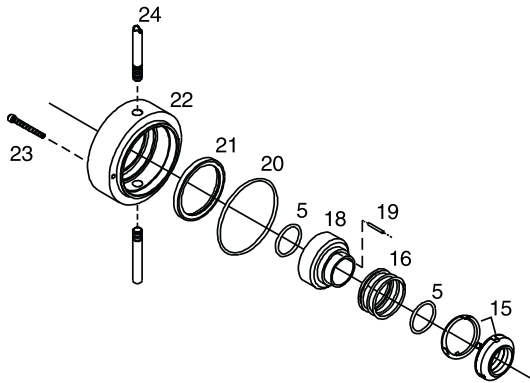
TYPE DG - EXTERNAL BALANCED SEAL



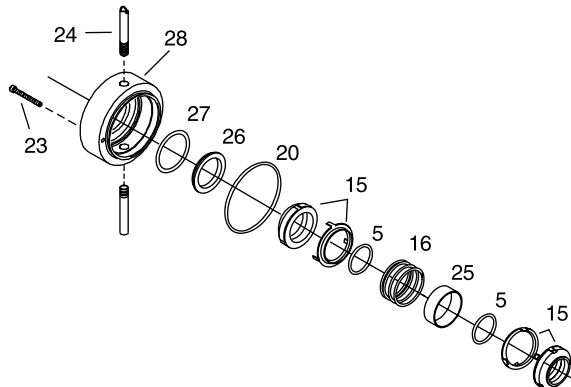
JOHN CRANE DOUBLE 8 SEAL



TYPE FG - WATER COOLED SINGLE SEAL



TYPE EG - WATER COOLED BALANCED DOUBLE SEAL



PARTS LIST

CROSS SECTIONAL VIEW

KEY #	DESCRIPTION	QTY	KEY #	DESCRIPTION	QTY
1	Casing	1	25	Spacing Ring	1
2	Impeller	1	26	Stationary Seal, Rear	1
3	Cover	1	27	O-ring, Stationary Seal	1
4	Impeller Screw	1	28	Stuffing Box (Type EG)	1
1 5	O-ring	1, 2 or 3	29	Adapter	1
3 6	Wingnut	6 or 8	30	Screw, Motor	4
3 7	Stud, Casing / Cover	6 or 8	31	Washer, Motor	4
8	Cover O-ring	1	32	Seal Guard	1
9	Screw, Seal Gland	4	33	Screw, Seal Guard	1
10	Seal Gland	1	34	Stub Shaft	1
11	Gasket	2	35	Compression Ring, Threaded	1
12	Stationary Seal	1	36	Compression Ring	1
4 13	Nut, Casing / Adapter	2 or 4	37	Screw, Compression Ring	6
4 14	Washer, Casing / Adapter	2 or 4	5 38	Washer, Compression Ring, Seal Gland	6 4
2 15	Rotating Seal	1 or 2	39	Pin, Stub Shaft	1
16	Spring	1	7 40	Retaining Ring, Stub Shaft	1
17	Drive Collar	1	41	Leg Bracket	2
18	Drive Collar, Stainless Steel	1	42	Screw, Leg Bracket	4
19	Pin, Drive Collar	1	43	Washer, Leg Bracket	4
20	O-ring, Stuffing Box	1	44	Set Screw, Adjustable Leg	4
21	Single Flush Lip Seal	1	45	Adjustable Leg	4
22	Stuffing Box (Type FG)	1	6 46	Motor	1
23	Screw, Stuffing Box	2	47	Stuffing Box (John Crane)	1
24	Flush Pipe	2	48	John Crane Double 8 Seal	1

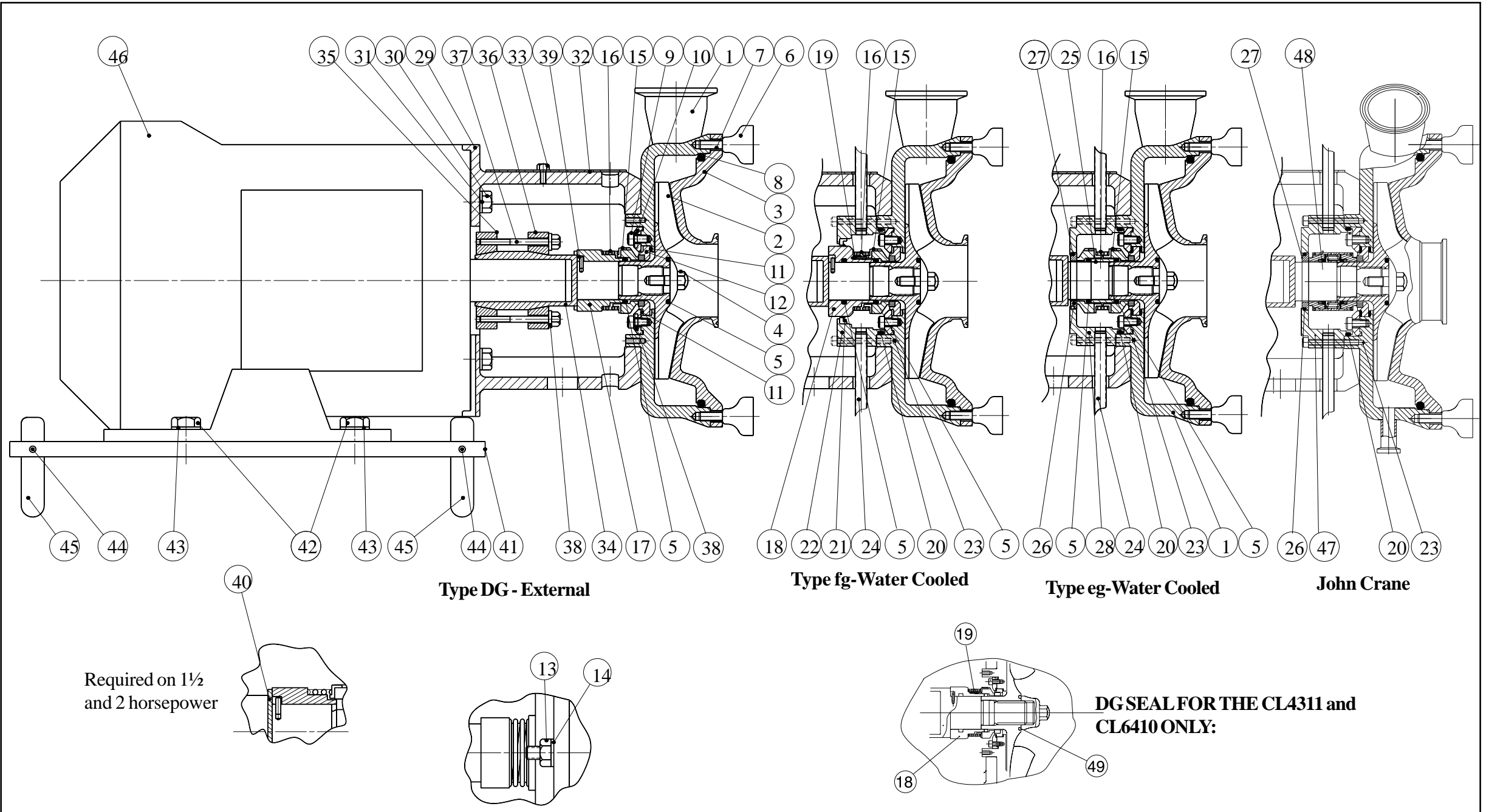
- 1 *O-ring requirements:*
 Impeller - 1 o-ring (CL4311, 6410 - use key #49, 1 o-ring)
 Type DG Seal - 1 o-ring
 Type FG Seal - 2 o-rings
 Type EG Seal - 2 o-rings

- 2 EG Seal requires two Rotating Seals.
 3 CL4311 and CL6410 require 8 wing nuts and studs.
 4 CL4311 and CL6410 require 4 nuts and 4 washers.
 5 CL4311 and CL6410 do not require a washer for the seal gland.

- 6 CL4311 pumps with frame size 320 and larger use motors with special Duplex thrust bearings. Contact your local Tri-Clover distributor or Tri-Clover for more information.

- 7 Required on 1½ and 2 horsepower motors only.

Parts List



PARTS LIST

CL PUMP REPLACEMENT PARTS

Key No.	Description	CL2264	CL2265	CL2284	CL3285	CL3295
		Part Number	Part Number	Part Number	Part Number	Part Number
1*	Casing - Tri-Clamp, Industrial	9612-7091-15	9612-7093-15	9612-7095-15	9612-7094-15	9612-7096-15
1*	Casing - Tri-Clamp, Sanitary	9612-7091-04	9612-7093-04	9612-7095-04	9612-7094-04	9612-7096-04
1*	Casing - Tri-Clamp, Sanitary Plus	9612-7091-01	9612-7093-01	9612-7095-01	9612-7094-01	9612-7096-01
2**	Impeller - Full Size, Industrial	9612-7038-50	9612-7039-50	9612-7045-50	9612-7044-50	9612-7040-50
2**	Impeller - Full Size, Sanitary, San. Plus	9612-7038-02	9612-7039-02	9612-7045-02	9612-7044-02	9612-7040-02
3*	Cover - Tri-Clamp, Industrial	9612-7101-15	9612-7103-15	9612-7105-15	9612-7104-15	9612-7106-15
3*	Cover - Tri-Clamp, Sanitary	9612-7101-04	9612-7101-04	9612-7101-04	9612-7101-04	9612-7101-04
3*	Cover - Tri-Clamp, Sanitary Plus	9612-7101-01	9612-7101-01	9612-7101-01	9612-7101-01	9612-7101-01
4	Impeller Screw	9612-7070-02	9612-7070-02	9612-7070-02	9612-7070-02	9612-7070-02
5	O-ring - Buna N	9612-7301-01	9612-7301-01	9612-7301-01	9612-7301-01	9612-7301-01
5	O-ring - EPDM	9612-7301-02	9612-7301-02	9612-7301-02	9612-7301-02	9612-7301-02
5	O-ring - SFY (Fluoroelastomer)	9612-7301-03	9612-7301-03	9612-7301-03	9612-7301-03	9612-7301-03
6	Wingnut	9612-7308-01	9612-7308-01	9612-7309-01	9612-7309-01	9612-7309-01
7	Stud, Casing / Cover	9612-7304-01	9612-7304-01	9612-7305-01	9612-7305-01	9612-7305-01
8	Cover O-ring - Buna N	751560	751561	751563	751563	751578
8	Cover O-ring - EPDM	751543	751556	751558	751558	751559
8	Cover O-ring - SFY (Fluoroelastomer)	751519	751529	751536	751536	751542
9 - 12	(Seal Parts)	Refer to Seal Replacement Parts later in this manual.				
13	Nut, Casing / Adapter	9612-7306-01	9612-7306-01	9612-7306-01	9612-7306-01	9612-7306-01
14	Washer, Casing/Adapter	9612-7307-01	9612-7307-01	9612-7307-01	9612-7307-01	9612-7307-01
15 - 28	(Seal Parts)	Refer to Seal Replacement Parts later in this manual.				

* Other port connections available upon request. Contact Tri-Clover for details.

** Cut down impeller sizes available upon request. Contact Tri-Clover for details.

PARTS LIST

CL PUMP REPLACEMENT PARTS

Key No.	Description	CL4311	CL4359	CL4378	CL4387	CL4488
		Part Number	Part Number	Part Number	Part Number	Part Number
1*	Casing - Tri-Clamp, Industrial	9612-7100-15	9612-7092-15	9612-7097-15	9612-7098-15	9612-7099-15
1*	Casing - Tri-Clamp, Sanitary	9612-7100-04	9612-7092-04	9612-7097-04	9612-7098-04	9612-7099-04
1*	Casing - Tri-Clamp, Sanitary Plus	9612-7100-01	9612-7092-01	9612-7097-01	9612-7098-01	9612-7099-01
2**	Impeller - Full Size, Industrial	9612-7169-50	9612-7043-50	9612-7046-50	9612-7041-50	9612-7042-50
2**	Impeller - Full Size, Sanitary, San. Plus	9612-7169-02	9612-7043-02	9612-7046-02	9612-7041-02	9612-7042-02
3*	Cover - Tri-Clamp, Industrial	9612-7110-15	9612-7102-15	9612-7107-15	9612-7108-15	9612-7109-15
3*	Cover - Tri-Clamp, Sanitary	9612-7110-04	9612-7102-04	9612-7107-04	9612-7108-04	9612-7109-04
3*	Cover - Tri-Clamp, Sanitary Plus	9612-7110-01	9612-7102-01	9612-7107-01	9612-7108-01	9612-7109-01
4	Impeller Screw	9612-7170-01	9612-7070-02	9612-7070-02	9612-7070-02	9612-7070-02
5	O-ring - Buna N	9612-7325-01	9612-7301-01	9612-7301-01	9612-7301-01	9612-7301-01
5	O-ring - EPDM	9612-7325-02	9612-7301-02	9612-7301-02	9612-7301-02	9612-7301-02
5	O-ring - SFY (Fluoroelastomer)	9612-7325-03	9612-7301-03	9612-7301-03	9612-7301-03	9612-7301-03
6	Wingnut	9612-7309-01	9612-7308-01	9612-7309-01	9612-7309-01	9612-7309-01
7	Stud, Casing / Cover	9612-7326-01	9612-7304-01	9612-7305-01	9612-7305-01	9612-7305-01
8	Cover O-ring - Buna N	9612-7323-02	751560	751563	751578	751578
8	Cover O-ring - EPDM	9612-7323-01	751543	751558	751559	751559
8	Cover O-ring - SFY (Fluoroelastomer)	9612-7323-03	751519	751536	751542	751542
9 - 12	(Seal Parts)	Refer to Seal Replacement Parts later in this manual.				
13	Nut, Casing / Adapter	9612-7306-01	9612-7306-01	9612-7306-01	9612-7306-01	9612-7306-01
14	Washer, Casing/Adapter	9612-7301-01	9612-7307-01	9612-7307-01	9612-7307-01	9612-7307-01
15 - 28	(Seal Parts)	Refer to Seal Replacement Parts later in this manual.				

* Other port connections available upon request. Contact Tri-Clover for details.

** Smaller impeller sizes available upon request. Contact Tri-Clover for details.

PARTS LIST

CL PUMP REPLACEMENT PARTS

Key No.	Description	140TC NEMA Frames	180TC NEMA Frames	210TC NEMA Frames	250TC NEMA Frames	280TSC NEMA Frames	320TSC NEMA Frames
		Part Number	Part Number	Part Number	Part Number	Part Number	Part Number
29	Adapter	9612-7065-01	9612-7066-01	9612-7067-01	9612-7068-01	9612-7068-02	9612-7069-01
30	Screw, Motor	189888	189888	189888	189888	189888	189888
31	Washer, Motor	189952	189952	189952	189952	189952	189952
32	Seal Guard	7612-7114-01	9612-7075-01	9612-7075-02	7612-7075-03	9612-7075-03	9612-7075-03
33	Screw, Seal Guard	9612-7315-01	9612-7315-01	9612-7315-01	9612-7315-01	9612-7315-01	9612-7315-01
34	Stub Shaft	9612-7032-01	9612-7031-01	9612-7033-01	9612-7034-01	9612-7034-01	9612-7035-01
35	Compression Ring, Threaded	9612-7037-01	9612-7037-02	9612-7037-05	9612-7037-03	9612-7037-03	9612-7037-06
36	Compression Ring	9612-7036-01	9612-7036-02	9612-7036-05	9612-7036-03	9612-7036-03	9612-7036-06
37	Screw, Compression Ring	9612-7314-01	9612-7314-01	9612-7314-02	9612-7314-03	9612-7314-03	9612-7314-03
38	Washer, Compression Ring	9612-7317-01	9612-7317-01	9612-7317-01	9612-7317-01	9612-7317-01	9612-7317-01
39	Pin, Stub Shaft	9612-7311-01	9612-7311-01	9612-7311-01	9612-7311-01	9612-7311-01	9612-7311-01
40	Retaining Ring, Stub Shaft	9612-7313-01	N/A	N/A	N/A	N/A	N/A
41	Leg Bracket	483052	480325	480328	480338	480355	N/A
42	Screw, Leg Bracket	180701	189741	189741	180148	180148	N/A
43	Washer, Leg Bracket	180037	180070	180070	189952	189952	N/A
44	Set Screw, Adjustable Leg	180260	180259	180259	180259	180259	N/A
45	Adjustable Leg	483075	483075	483075	483626	483626	N/A
46	Motor	Refer to Motor price booklet					
47	Stuffing Box (John Crane)	Refer to Seal Replacement Parts later in this manual.					
48	John Crane Double 8 Seal	Refer to Seal Replacement Parts later in this manual.					

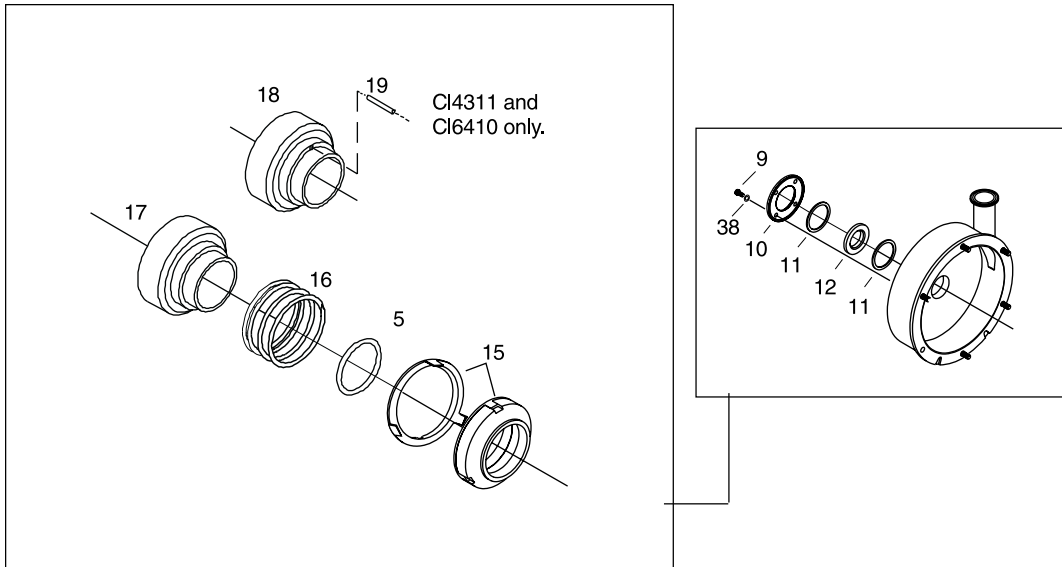
PARTS LIST

CL PUMP REPLACEMENT PARTS

Key No.	Description	213-215 TC	254-256 TC	284-286 TC	324-365 TSC	405 TSC
		Part Number	Part Number	Part Number	Part Number	Part Number
29	Adapter	9612-7205-03	9612-7205-03	9612-7205-01	9612-7205-02	9612-7205-02
30	Screw, Motor	189888	189888	189888	189797	189797
31	Washer, Motor	189971	189971	189971	189569	189569
32	Seal Guard	9612-7171-01	9612-7171-01	9612-7171-01	9612-7171-01	9612-7171-01
33	Screw, Seal Guard	9612-7315-01	9612-7315-01	9612-7315-01	9612-7315-01	9612-7315-01
34	Stub Shaft	9612-7198-02	9612-7188-02	9612-7186-02	9612-7086-02	9612-7089-02
35	Compression Ring, Threaded	9612-7037-05	9612-7037-03	9612-7037-04	9612-7037-04	9612-7037-06
36	Compression Ring	9612-7036-05	9612-7036-03	9612-7036-04	9612-7036-04	9612-7036-06
37	Screw, Compression Ring	9612-7314-02	9612-7314-03	9612-7314-03	9612-7314-03	9612-7314-03
38	Washer, Compression Ring	9612-7317-01	9612-7317-01	9612-7317-01	9612-7317-01	9612-7317-01
39	Pin, Stub Shaft	9612-7311-01	9612-7311-01	9612-7311-01	9612-7311-01	9612-7311-01
40	Retaining Ring, Stub Shaft	480328	480338	480355	-	-
41	Leg Bracket	189741	180148	180148	-	-
42	Screw, Leg Bracket	180070	189952	189952	-	-
43	Washer, Leg Bracket	180259	180259	180259	-	-
44	Set Screw, Adjustable Leg	483075	483626	483626	-	-
45	Adjustable Leg	483075	483626	483626	-	-
46	Motor	Refer to Motor price booklet				
47	Stuffing Box (John Crane)	Refer to Seal Replacement Parts later in this manual.				
48	John Crane Double 8 Seal	Refer to Seal Replacement Parts later in this manual.				

PARTS LIST

SEAL REPLACEMENT PARTS - Type DG (External Balanced Seal)



Key No.	Description	CL2264 CL2265 CL2284 CL3285 CL3295	CL4359 CL4378 CL4387 CL4488	CL4311
		Part Number	Part Number	Part Number
5*	O-Ring - Buna N	9612-7301-01	9612-7301-01	9612-7325-02
5*	O-Ring - EPDM	9612-7301-02	9612-7301-02	9612-7325-01
5*	O-Ring - SFY (Fluoroelastomer)	9612-7301-03	9612-7301-03	9612-7325-03
9	Screw, Seal Gland	9612-7303-01	9612-7303-01	189643
10	Seal Gland	9612-7008-01	9612-7008-01	9612-7184-01
11*	Front & Rear Stationary Seal Gaskets, Buna N	9612-7130-02	9612-7130-02	9612-7321-02
11*	Front & Rear Stationary Seal Gaskets, EPDM	9612-7130-01	9612-7130-01	9612-7321-01
11*	Front & Rear Stationary Seal Gaskets, SFY	9612-7130-03	9612-7130-03	9612-7321-03
11*	Front Gasket, Stationary Seal, PTFE	9612-7130-04	9612-7130-04	9612-7321-04
12*	Silicon Carbide Stationary Seal	9612-7000-01	9612-7000-01	9612-7178-01
15*	Rotating Seal - Carbon (includes cup)	9612-7115-01	9612-7115-01	9612-7181-01
15*	Rotating Seal - SiC (includes cup)	9612-7115-02	9612-7115-02	9612-7181-02
16*	Spring	9612-7116-01	9612-7116-01	9612-7182-01
17	Drive Collar	9612-7004-01	9612-7004-01	--
18	Drive Collar - Stainless Steel	--	9612-7009-02	9612-7173-01
19	Pin, Drive Collar	--	--	9612-7319-01
38	Washer, Compression Ring	9612-7317-01	9612-7317-01	9612-7317-01

* Included in seal kits:

Buna N - kit number 9612-7118-02. For models CL4311 or CL6410, order 9612-7177-02

Buna N, SiC - kit number 9612-7119-02. For models CL4311 or CL6410, order 9612-7177-05

EPDM - kit number 9612-7118-01. For models CL4311 or CL6410, order 9612-7177-01

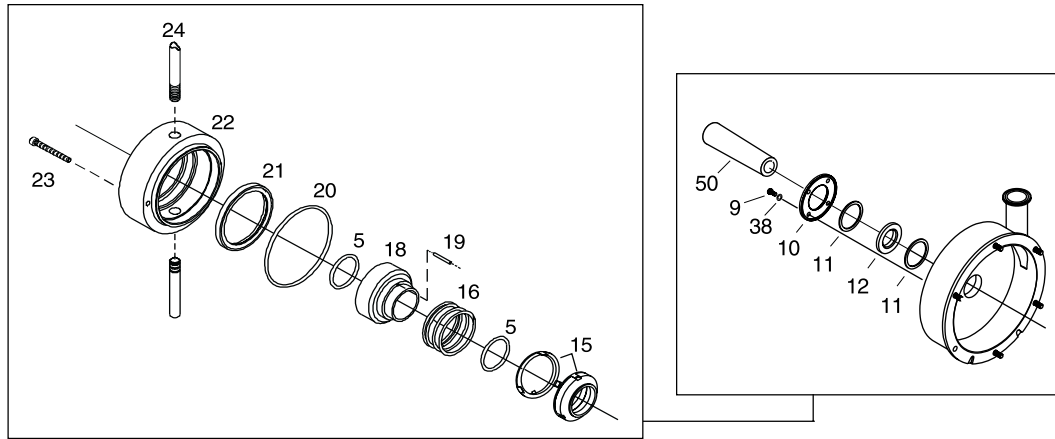
EPDM, SiC - kit number 9612-7119-01. For models CL4311 or CL6410, order 9612-7177-04

SFY - kit number 9612-7118-03. For models CL4311 or CL6410, order 9612-7177-03

SFY, SiC - kit number 9612-7119-03. For models CL4311 or CL6410, order 9612-7177-06

PARTS LIST

SEAL REPLACEMENT PARTS - Type FG (Water cooled Single Seal)



Key No.	Description	All Models except CL4311	CL4311
		Part Number	Part Number
5*	O-Ring - Buna N	9612-7301-01	9612-7325-02
5*	O-Ring - EPDM	9612-7301-02	9612-7325-01
5*	O-Ring - SFY (Fluoroelastomer)	9612-7301-03	9612-7325-03
9	Screw, Seal Gland	9612-7303-01	189643
10	Seal Gland	9612-7008-01	9612-7184-01
11*	Front & Rear Stationary Seal Gaskets, Buna N	9612-7130-02	9612-7321-02
11*	Front & Rear Stationary Seal Gaskets, EPDM	9612-7130-01	9612-7321-01
11*	Front & Rear Stationary Seal Gaskets, SFY	9612-7130-03	9612-7321-03
11*	Front Gasket, Stationary Seal, PTFE	9612-7130-04	9612-7321-04
12*	Silicone Carbide Seal	9612-7000-01	9612-7000-01
15*	Rotating Seal - Carbon (includes cup)	9612-7115-01	9612-7181-01
15*	Rotating Seal - SiC (includes cup)	9612-7115-02	9612-7181-02
16*	Spring	9612-7116-01	9612-7182-01
18	Drive Collar, Stainless Steel	9612-7009-02	9612-7173-01
19	Pin, Drive Collar	9612-7312-01	9612-7319-01
20*	O-ring, Stuffing Box - Buna	9612-7300-01	9612-7300-01
20*	O-ring, Stuffing Box - EPDM	9612-7300-02	9612-7300-02
20*	O-ring, Stuffing Box - SFY	9612-7300-03	9612-7300-03
21*	Single Flush Lip Seal	9612-7117-01	9612-7324-01
22	Stuffing Box	9612-7007-01	9612-7007-01
23	Screw, Stuffing Box	9612-7302-01	9612-7302-01
24	Flush Pipe	9612-7129-01	9612-7129-01
38	Washer, Compression Ring	9612-7317-01	9612-7317-01
50*	Seal Installation Tool	9612-7320-02	9612-7320-03

* Included in seal kits:

Buna N - kit number 9612-7118-08. For models CL4311 or CL6410, order 9612-7177-08

Buna N, SiC - kit number 9612-7119-08. For models CL4311 or CL6410, order 9612-7177-11

EPDM - kit number 9612-7118-07. For models CL4311 or CL6410, order 9612-7177-07

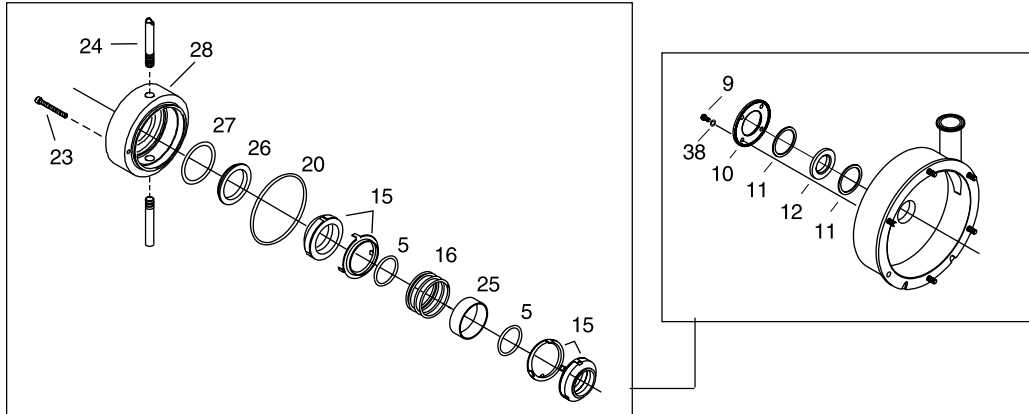
EPDM, SiC - kit number 9612-7119-07. For models CL4311 or CL6410, order 9612-7177-10

SFY - kit number 9612-7118-09. For models CL4311 or CL6410, order 9612-7177-09

SFY, SiC - kit number 9612-7119-09. For models CL4311 or CL6410, order 9612-7177-12

PARTS LIST

SEAL REPLACEMENT PARTS - Type EG (Water cooled, Balanced Double Seal)



Key No.	Description	All Models except CL4311 or CL6410**
		Part Number
5*	O-Ring - Buna N	9612-7301-01
5*	O-Ring - EPDM	9612-7301-02
5*	O-Ring - SFY (Fluoroelastomer)	9612-7301-03
9	Screw, Seal Gland	9612-7303-01
10	Seal Gland	9612-7008-01
11*	Front & Rear Stationary Seal Gaskets, Buna N	9612-7130-02
11*	Front & Rear Stationary Seal Gaskets, EPDM	9612-7130-01
11*	Front & Rear Stationary Seal Gaskets, SFY	9612-7130-03
11*	Front Gasket, Stationary Seal, PTFE	9612-7130-04
12*	Silicone Carbide Stationary Seal	9612-7000-01
15*	Carbon Rotating Seal (includes cup), Buna N and EPDM	9612-7115-01
15*	Silicone Carbide Rotating Seal (includes cup), Buna N, SiC and EPDM, SiC	9612-7115-02
16*	Spring	9612-7116-01
20*	O-ring, Stuffing Box - Buna	9612-7300-01
20*	O-ring, Stuffing Box - EPDM	9612-7300-02
20*	O-ring, Stuffing Box - SFY	9612-7300-03
23	Screw, Stuffing Box	9612-7302-01
24	Flush Pipe	9612-7129-01
25	Spacing Ring	9612-7006-01
26*	Stationary Seal, Rear, SiC	9612-7113-01
26*	Stationary Seal, Rear, Stainless Steel	9612-7113-02
27*	O-Ring, Stationary Seal, Buna	9612-7316-02
27*	O-Ring, Stationary Seal, EPDM	9612-7316-01
27*	O-Ring, Stationary Seal, SFY (fluoroelastomer)	9612-7316-03
28	Stuffing Box	9612-7111-01
38	Washer, Compression Ring	9612-7317-01
50*	Seal Installation Tool	9612-7320-02

* Included in seal kits:

Buna N - kit number 9612-7118-05, Buna N, SiC - kit number 9612-7119-05

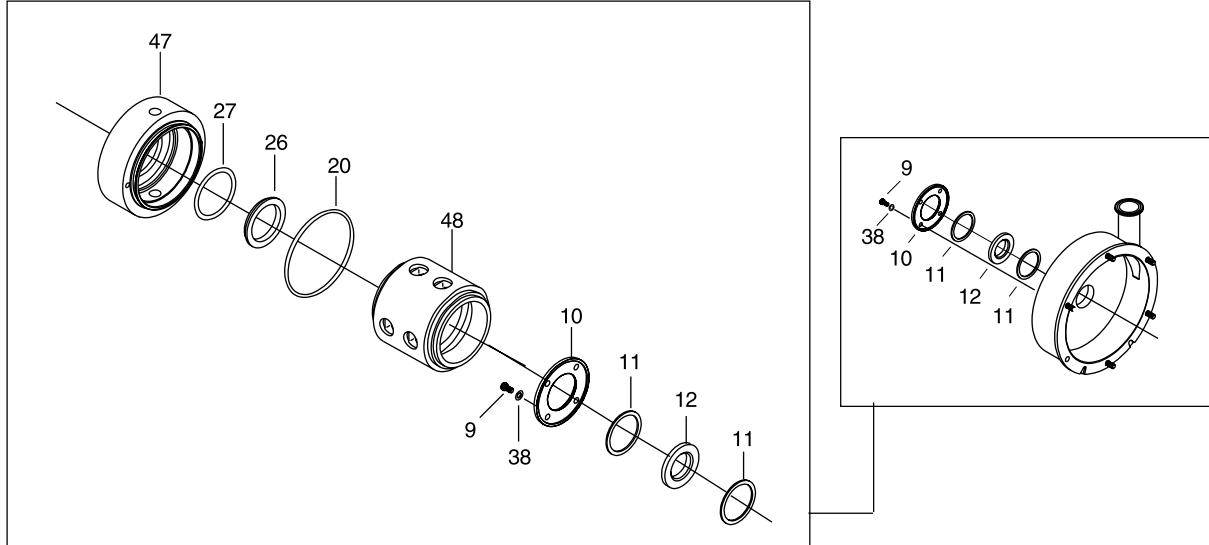
EPDM - kit number 9612-7118-04, EPDM, SiC - kit number 9612-7119-04.

SFY (Fluoroelastomer) - kit number 9612-7118-06, SFY (Fluoroelastomer), SiC - kit number 9612-7119-06

** Consult Tri-Clover for a model CL4311 or CL6410 with a type EG seal.

PARTS LIST

SEAL REPLACEMENT PARTS - JOHN CRANE DOUBLE 8 SEAL



Key No.	Description	All Models except CL4311 or CL6410
		Part Number
9	Screw, Seal Gland	9612-7303-01
10	Seal Gland	9612-7008-01
11*	Front & Rear Stationary Seal Gaskets, Buna N	9612-7130-02
11*	Front & Rear Stationary Seal Gaskets, EPDM	9612-7130-01
12*	Silicone Carbide Stationary Seal	9612-7000-01
20*	O-ring, Stuffing Box - Buna	9612-7300-01
20*	O-ring, Stuffing Box - EPDM	9612-7300-02
20*	O-ring, Stuffing Box - SFY	9612-7300-03
26*	Stationary Seal, Rear, SiC	9612-7113-01
26*	Stationary Seal, Rear, Stainless Steel	9612-7113-02
27*	O-Ring, Stationary Seal, Buna	9612-7316-02
27*	O-Ring, Stationary Seal, EPDM	9612-7316-01
27*	O-Ring, Stationary Seal, SFY (fluoroelastomer)	9612-7316-03
47	Stuffing Box	9612-7111-02
48	John Crane Double Seal Type 8B2 - Viton	9612-7318-01
48	John Crane Double Seal Type 8B2 - EPDM	9612-7318-02

* Included in seal kits:

Buna N - kit number 9612-7118-05, Buna N, SiC - kit number 9612-7119-05

EPDM - kit number 9612-7118-04, EPDM, SiC - kit number 9612-7119-04.

SFY (Fluoroelastomer) - kit number 9612-7118-06, SFY (Fluoroelastomer), SiC - kit number 9612-7119-06