

PARTS LIST

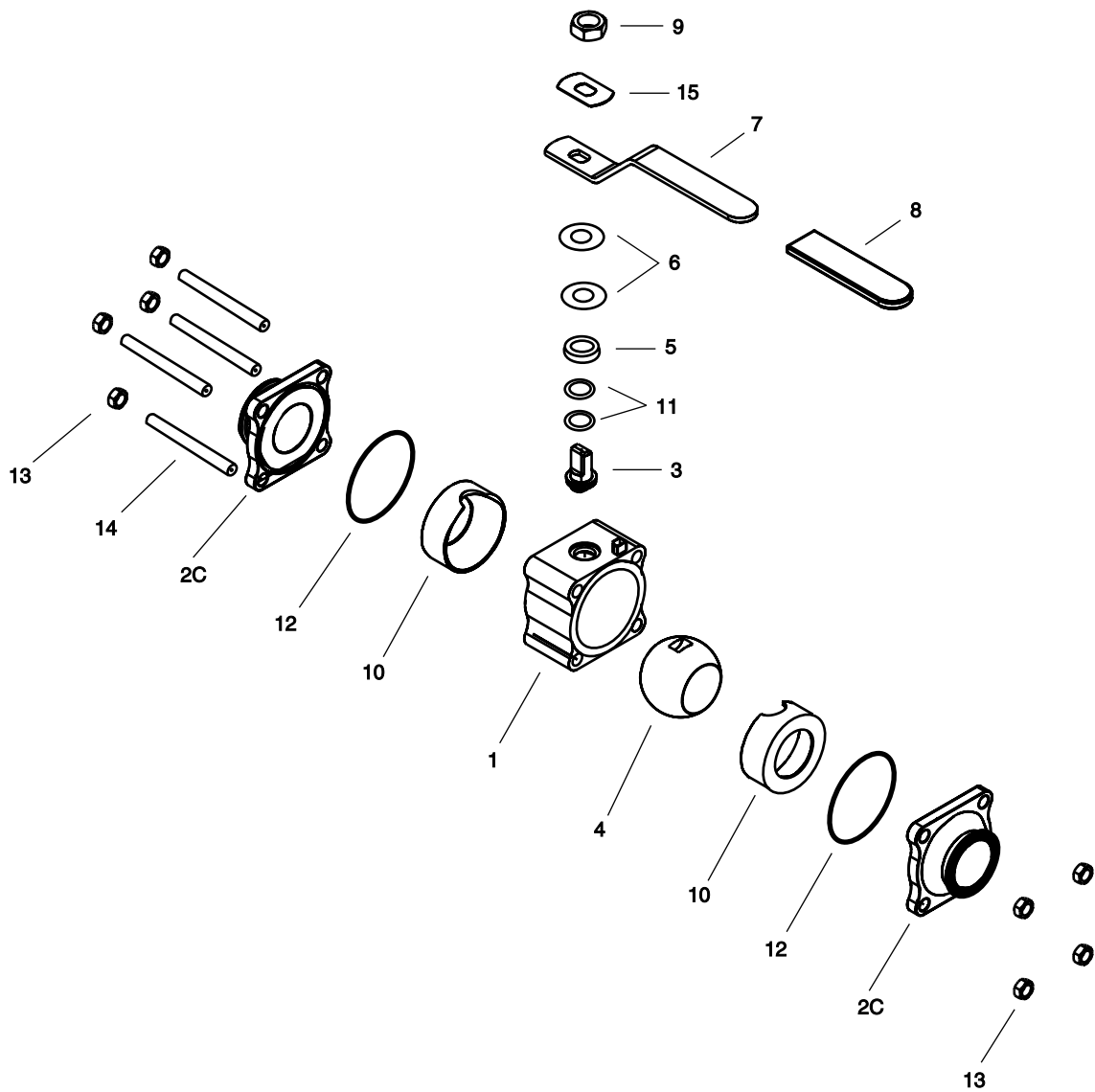
EXPLODED VIEW

BALL VALVE

All orders for repair parts must contain the following data.

1. Complete model number (located on the valve ID plate), including size.
2. Description and part number.

The following exploded view and accompanying parts list facilitate ordering repair parts from the factory. All parts illustrated are indexed to the parts list by key numbers.



Parts List

BALL Valves Models 4308, 4309, 4310

Key #	Description	1/2"	3/4"	1"	1 1/2"	2"	3"	4"
* 1	Valve Body	C0501-367-018	C0701-366-018	C1001-371-018	C1501-322-018	C2001-373-018	C3001-269-018	C4001-234-018
2a	Body End (Butt Weld)	C0501-380-018	C0701-380-018	C1001-387-018	C1501-335-018	C20010401-018	Not available	Not available
2b	Body End (Flanged)	Not available	Not available	C1001-428-018	C1501-375-018	C2001-474-018	Not available	Not available
2c	Body End (Tri-Clamp)	C0701-366-018	C0701-367-018	C1001-372-018	C1501-323-018	C2001-374-018	C3001-270-018	C4001-235-018
3	Stem	C0704-119-018	C0704-119-018	C1004-101-018	C1504-123-018	C1504-123-018	C3004-119-018	C3004-119-018
4	Ball	C0537-004-018	C0737-004-018	C1037-004-018	C1537-004-018	C2037-005-018	C3037-001-018	C4037-002-018
5	Packing retainer	C0709-015-018	C0709-015-018	C1009-031-018	C2009-005-018	C2009-005-018	C3009-005-018	C3009-005-018
6	Spring washer	C0735-040-037	C0735-040-037	C1035-065-037	C1535-056-037	C1535-056-037	C3035-116-037	C3035-116-037
7	Handle	C0711-018-012	C0711-018-012	C1011-020-012	C1511-017-012	C1511-017-012	C3011-008-007	C3011-008-012
8	Handle cover	C0735-046-234	C0735-046-234	C1035-063-234	C1535-050-234	C1535-050-234	Not available	Not available
9	Hex jam nut	C1035-001-037	C1035-001-037	C1035-000-037	C4029-057-037	C4029-057-037	C6029-052-037	C6029-052-037
10	Ball Seat	C0547-003-049	C0747-004-049	C1047-005-034	C1547-006-034	C2047-005-034	C3047-002-034	C4047-002-034
11	Packing Ring	C0547-003-049	C0547-004-049	C1008-018-034	C2008-008-034	C2008-008-034	C3008-011-034	C3008-011-034
12	Gasket /O-ring	C0518-026-034	C0716-071-034	C1018-089-034	C1516-075-034	C2018-090-034	C3018-072-034	C4018-065-034
13	Hex nut	C0529-003-231	C0529-003-231	C0529-003-231	C1029-003-231	C1529-003-231	C8029-003-231	C8229-002-231
14	Stud	C1029-051-106	C1029-045-106	C2029-088-106	C1529-054-106	C2029-088-106	C3029-072-106	C4029-073-106
15	ID plate	C0514-519-010	C0714-494-010	C1014-538-010	C1514-530-010	C2014-565-010	C3014-372-010	C4014-297-010
16	Screw	Not available	Not available	Not available	Not available	Not available	C0529-059-012	C0529-059-012
17a	Repair Kit, containing items 10, 11, 12 (2 ea.) (Std. PTFE)	C0547-003-034	C0747-003-034	C1047-005-034	C1547-006-034	C2047-005-034	C3047-002-034	C4047-002-034
17b	Repair Kit, containing items 10, 11, 12 2 ea.) (Std. Reinforced)	C0547-003-049	C0747-003-049	C1047-005-049	C1547-006-049	C2047-005-049	C3047-002-049	C4047-002-049
17c	Repair Kit, containing items 10, 11, 12 2 ea.) (Encap. PTFE)	C0547-004-034	C0747-005-034	C1047-006-034	C1547-007-034	C2047-006-034	C3047-003-034	C4047-003-034
17d	Repair Kit, containing items 10, 11, 12 2 ea.) (Encap. Reinforced)	C0547-004-034	C0747-005-034	C1047-006-049	C1547-007-049	C2047-006-049	Not available	Not available

*Note: Specify the type of port connections required.