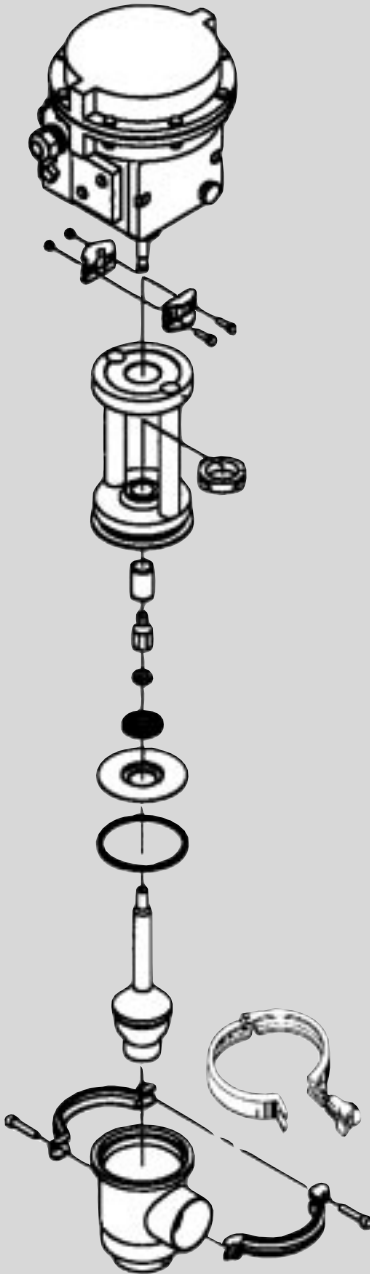
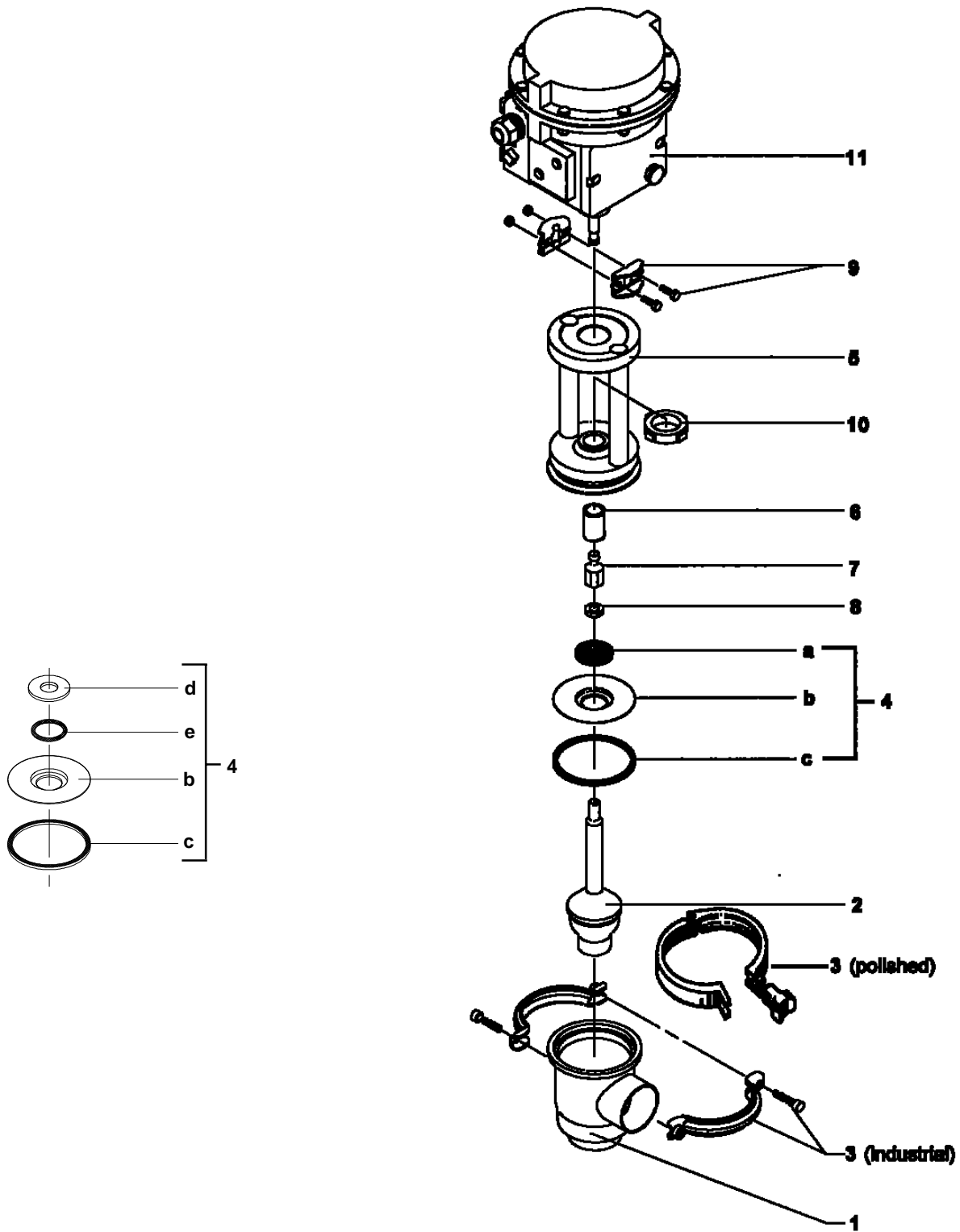


Spare Parts List

SPC-2 Pressure Control Valve





Sanitary Electro-Pneumatic Modulating Valve SPC-2 (Samson actuator, beige colour)

Pos.	Qty.	Description	1.5" Part No.	2" Part No.	2.5" Part No.	3" Part No.	4" Part No.
ISO							
1*	1	Valve body, Kv 0.5	9612-1155-01	N/A	N/A	N/A	N/A
	1	Valve body, Kv 1	9612-1155-02	N/A	N/A	N/A	N/A
	1	Valve body, Kv 2	9612-1155-03	N/A	N/A	N/A	N/A
	1	Valve body, Kv 4	9612-1155-04	N/A	N/A	N/A	N/A
	1	Valve body, Kv 8	9612-1155-05	N/A	N/A	N/A	N/A
	1	Valve body, Kv 16	9612-1155-06	N/A	N/A	N/A	N/A
	1	Valve body, Kv 32	N/A	9612-1156-01	N/A	N/A	N/A
	1	Valve body, Kv 64	N/A	N/A	9612-1157-01	N/A	N/A
	1	Valve body, Kv 72	N/A	N/A	N/A	9612-1158-01	N/A
	1	Valve body, Kv 101	N/A	N/A	N/A	N/A	9612-1159-01
2	1	Plug, Kv 0.5	9612-5282-01	N/A	N/A	N/A	N/A
	1	Plug, Kv 1	9612-5283-01	N/A	N/A	N/A	N/A
	1	Plug, Kv 2	9612-5284-01	N/A	N/A	N/A	N/A
	1	Plug, Kv 4	9612-5285-01	N/A	N/A	N/A	N/A
	1	Plug, Kv 8	9612-5286-01	N/A	N/A	N/A	N/A
	1	Plug, Kv 32	N/A	9612-5288-01	N/A	N/A	N/A
	1	Plug, Kv 64	N/A	N/A	9612-5289-01	N/A	N/A
	1	Plug, Kv 72	N/A	N/A	N/A	9612-5289-01	N/A
	1	Plug, Kv 110	N/A	N/A	N/A	N/A	9612-5290-01

* Please Contact Alfa Laval Flow Inc. for polished valve bodies.

Pos.	Qty.	Description	1.5-2" Part No.	2.5-3" Part No.	4" Part No.
3	1	Clamp (industrial)	31320-0027-3	31320-0027-5	31320-0027-5
	1	Heavy duty clamp (polished)	9612-01-1204	9612-01-1205	9612-01-1205
4	1	Lip seal kit, EPDM (standard)	9611-92-0078	9611-92-0142	9611-92-0142
	1	Lip seal kit, NBR	9611-92-0079	9611-92-0143	9611-92-0143
	1	Lip seal kit, FPM	9611-92-0080	9611-92-0144	9611-92-0144
	1	Lip seal kit, PTFE	9611-92-0445	9611-92-0446	9611-92-0446
aΔ	1	Lip seal, EPDM (standard)	9612-2806-01	9612-3088-01	9612-3088-01
	1	Lip seal, NBR	9612-2806-02	9612-3088-02	9612-3088-02
	1	Lip seal, FPM	9612-2806-03	9612-3088-03	9612-3088-03
b	1	Plate	9612-2805-01	9612-3087-01	9612-3087-01
	1	Plate for FEP seal	31353-0453-1	31353-0454-1	31353-0454-1
cΔ	1	Seal ring, EPDM (standard)	31353-0128-1	31353-0205-1	31353-0205-1
	1	Seal ring, NBR	31353-0128-2	31353-0205-2	31353-0205-2
	1	Seal ring, FPM	31353-0128-3	31353-0205-3	31353-0205-3
	1	Seal ring, PTFE	31353-0451-1	31353-0451-2	31353-0451-2
d	1	Washer	31353-0452-1	31353-0452-2	31353-0452-2
eΔ	1	O-ring	9611-99-2909	9611-99-2910	9611-99-2910
5	1	Bonnet complete	9612-5331-01	9612-5331-02	9612-5331-02
6Δ	1	Guide ring	9612-3586-01	9612-3586-04	9612-3586-04
7	1	Valve plug adjuster	9612-5340-01	9612-5340-01	9612-5340-01
8	1	Lock nut	9612-5341-01	9612-5341-01	9612-5341-01
9	1	Clamp fitting	9612-5342-01	9612-5342-01	9612-5342-01
10	1	Striking nut	9612-5339-01	9612-5339-01	9612-5339-01
11	1	Actuator complete, NO	9612-5336-01	9612-5336-01	9612-5336-01
	1	Actuator complete, NC	9612-5336-02	9612-5336-02	9612-5336-03
Δ	1	Service kit, EPDM	9611-92-0419	9611-92-0423	9611-92-0423
Δ	1	Service kit, NBR	9611-92-0420	9611-92-0424	9611-92-0424
Δ	1	Service kit, FPM	9611-92-0421	9611-92-0425	9611-92-0425
Δ	1	Service kit, PTFE	9611-92-0422	9611-92-0426	9611-92-0426

Parts marked with Δ are included in the service kits.

Valve Body Combinations:



Recommended Spare Parts: Service kit

Recommended Spare Parts: Service kit

Alfa Laval

8201 104th Street

Pleasant Prairie, WI 53158-0909

Telephone: 800-558-2060

Fax: 262-947-4724

www.us.flow.alfalaval.com

Alfa Laval