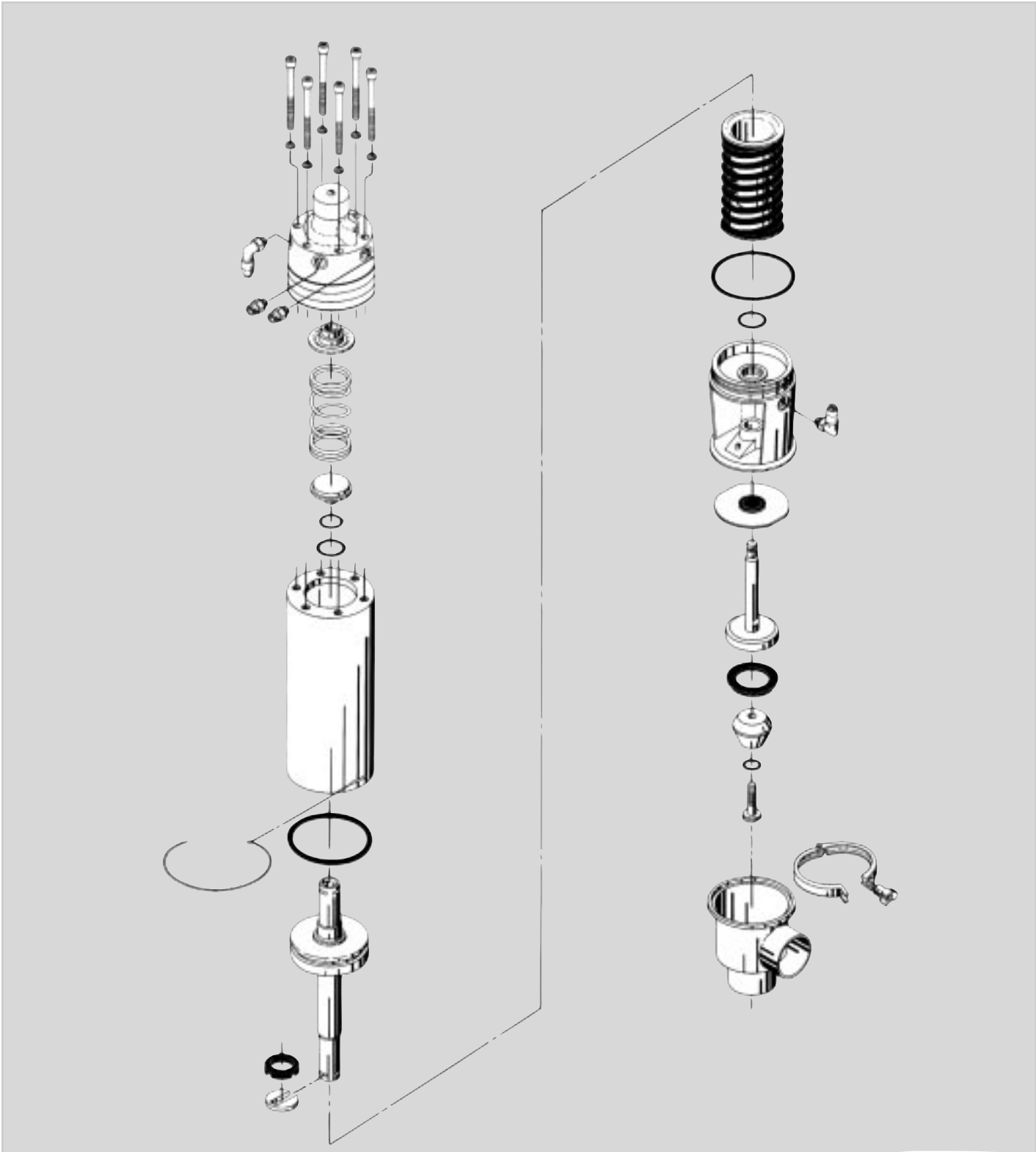
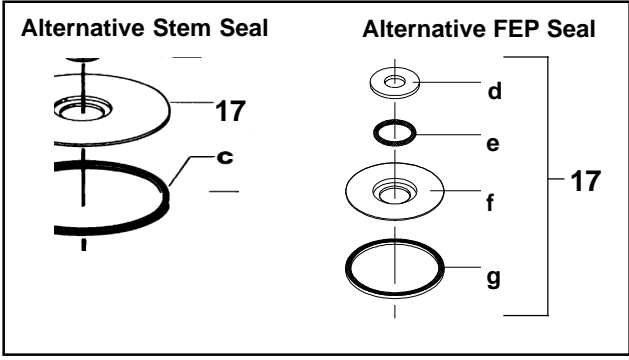
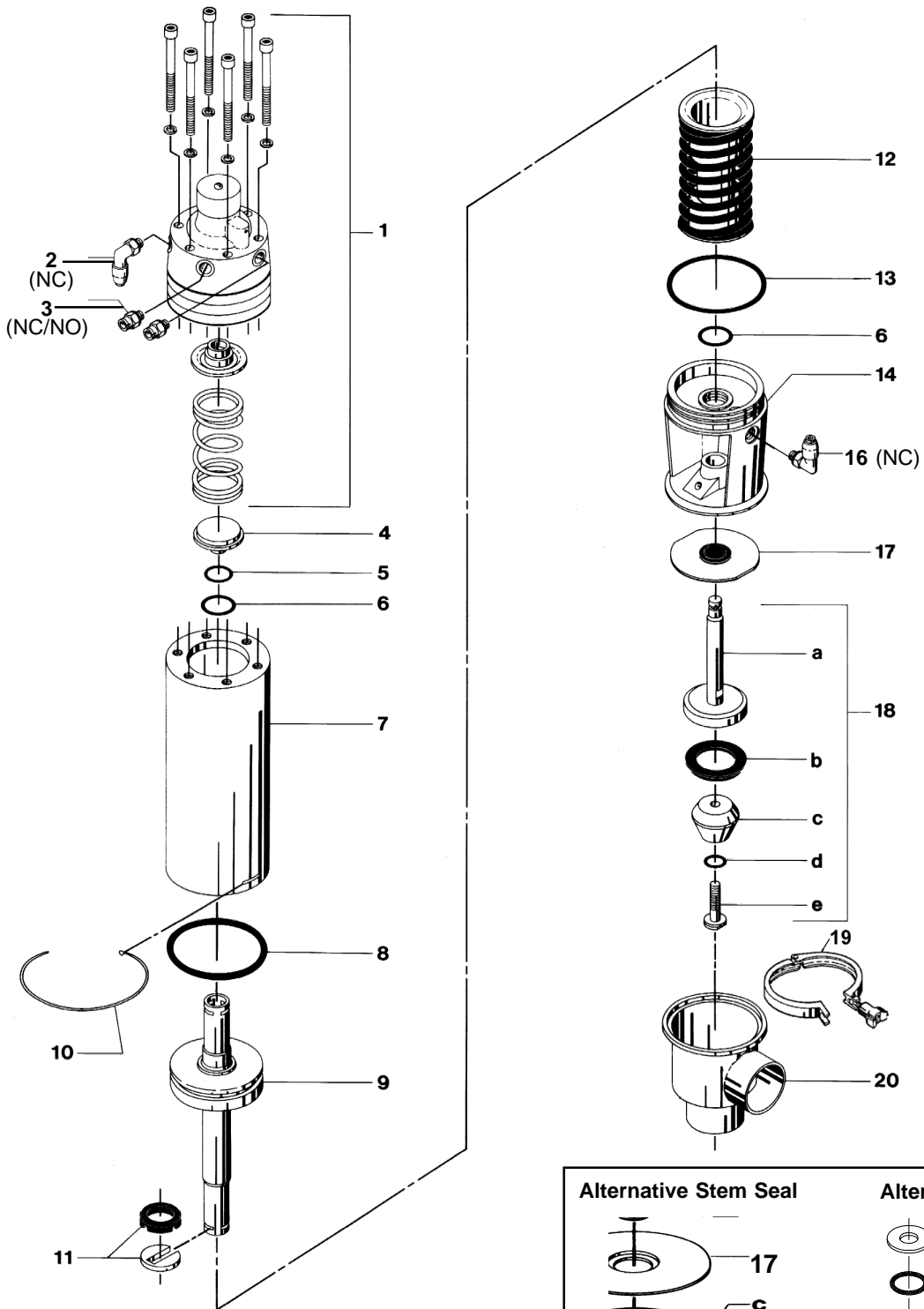


Spare Parts List

SPC-1 Pressure Control Valve





Sanitary Proportional Controlled Valve with Positioner SPC-1

Actuator

Pos.	Qty.	Description	1.5-inch Part No.	2-inch Part No.	2.5-inch Part No.	3-inch Part No.	4-inch Part No.
	1	Actuator complete, NO	31353-1154-1	31353-1154-1	31353-1154-1	31353-1154-4	31353-1154-4
	1	Actuator complete, NC	31353-1154-2	31353-1154-2	31353-1154-2	31353-1154-3	31353-1154-3
1	1	Valve positioner, NO	881169-94	881169-94	881169-94	881169-94	881169-94
1	1	Valve positioner, NC	881170-18	881170-18	881170-18	881170-18	881170-18
2	1	Air fitting, NC	881168-43	881168-43	881168-43	881168-43	881168-43
3	2	Air fitting, NO/NC	881-16878	881-16878	881-16878	881-16878	881-16878
4	1	Spring support	31353-1145-1	31353-1145-1	31353-1145-1	31353-1145-1	31353-1145-1
5Δ	1	O-ring	9611-99-0038	9611-99-0038	9611-99-0038	9611-99-0038	9611-99-0038
6Δ	2	O-ring	223406-25	223406-25	223406-25	223406-49	223406-49
7	1	Cylinder	31353-1148-1	31353-1148-1	31353-1148-1	31353-1148-2	31353-1148-2
8Δ	1	O-ring	223401-74	223401-74	223401-74	223401-75	223401-75
9	1	Piston	31353-0621-1	31353-0621-1	31353-0621-1	31353-0619-1	31353-0619-1
10Δ	1	Lock wire	31353-0151-1	31353-0151-1	31353-0151-1	31353-0189-1	31353-0189-1
11Δ	1	Clip complete	31353-0793-1	31353-0793-1	31353-0793-1	31353-0793-2	31353-0793-2
12	1	Spring assembly	31353-0625-1	31353-0625-1	31353-0625-1	31353-0622-1	31353-0622-1
13Δ	1	O-ring	223406-67	223406-67	223406-67	223406-17	223406-17
14	1	Bonnet	31353-0133-1	31353-0133-1	31353-0133-1	31353-0190-1	31353-0190-1
16	1	Air fitting, NC	8812494-20	8812494-20	8812494-20	8812494-20	8812494-20
Δ	1	Service kit for actuator	9611-92-0300	9611-92-0300	9611-92-0300	9611-92-0319	9611-92-0319

Parts marked with Δ are included in the actuator service kit.

Valve Parts

Pos.	Qty.	Description	1.5-inch Part No.	2-inch Part No.	2.5-inch Part No.	3-inch Part No.	4-inch Part No.
Stem Seal							
17♦	1	Lip seal, EPDM (standard)	31353-0155-1	31353-0155-1	31353-0155-1	31353-0188-1	31353-0188-1
	1	Lip seal, NBR	31353-0155-4	31353-0155-4	31353-0155-4	31353-0188-2	31353-0188-2
	1	Lip seal, FPM	31353-0155-3	31353-0155-3	31353-0155-3	31353-0188-3	31353-0188-3
Valve Plug							
18	1	Plug complete, EPDM (standard)	31353-0520-1	31353-0521-1	31353-0522-1	31353-0523-1	31353-0524-1
	1	Plug complete, NBR	31353-0520-2	31353-0521-2	31353-0522-2	31353-0523-2	31353-0524-2
	1	Plug complete, FPM	31353-0520-3	31353-0521-3	31353-0522-3	31353-0523-3	31353-0524-3
a	1	Stem	31353-0340-1	31353-0377-1	31353-0378-1	31353-0341-1	31353-0379-1
b♦	1	Seal, EPDM (standard)	31353-0320-1	31353-0321-1	31353-0322-1	31353-0324-1	31353-0325-1
	1	Seal, NBR	31353-0320-2	31353-0321-2	31353-0322-2	31353-0324-2	31353-0325-2
	1	Seal, FPM	31353-0320-3	31353-0321-3	31353-0322-3	31353-0324-3	31353-0325-3
	1	Packing, PTFE	31353-1211-1	31353-1212-1	31353-1213-1	31353-1214-1	31353-1215-1
c	1	Plug head	31353-0515-1	31353-0516-1	31353-0517-1	31353-0518-1	31353-0519-1
d♦	1	O-ring, EPDM (standard)	990034-01	990034-01	990034-01	990034-01	990034-01
	1	O-ring, NBR	223404-21	223404-21	223404-21	223404-21	223404-21
	1	O-ring, FPM	223404-35	223404-35	223404-35	223404-35	223404-35
	1	Seal-ring, PTFE	9612-4330-01	9612-4330-01	9612-4330-01	9612-4330-01	9612-4330-01
e	1	Screw	31353-0514-1	31353-0514-1	31353-0514-1	31353-0514-1	31353-0514-1
Clamp							
19	1	Heavy duty clamp	96120-1120-4	96120-1120-4	96120-1120-4	96120-1120-5	96120-1120-5
Valve body (polished)							
20	1	Valve body, weld	31353-1100-1	31353-1101-1	31353-1102-1	31353-1103-1	31353-1104-1
	1	Valve body, GC	31353-103010	31353-1030-2	31353-1030-3	31353-1030-4	31353-1030-5
♦	1	Service kit for valve, EPDM	9611-92-0010	9611-92-0013	9611-92-0016	9611-92-0019	9611-92-0022
♦	1	Service kit for valve, NBR	9611-92-0011	9611-92-0014	9611-92-0017	9611-92-0020	9611-92-0023
♦	1	Service kit for valve, FPM	9611-92-0012	9611-92-0015	9611-92-0018	9611-92-0021	9611-92-0024

Parts marked with ♦ are included in the valve service kits.

Recommended Spare Parts: Service kit

Alfa Laval

Valve Parts (continued)

Pos.	Qty.	Description	1.5-inch Part No.	2-inch Part No.	2.5-inch Part No.	3-inch Part No.	4-inch Part No.
Alternative for 1.5" plug							
18c	1	Plug head, Kv 14	31353-0532-1	N/A	N/A	N/A	N/A
18e	1	Screw, Kv 14	31353-0514-2	N/A	N/A	N/A	N/A

Alternative for Stem Seal

Pos.	Qty.	Description	1.5-inch Part No.	2-inch Part No.	2.5-inch Part No.	3-inch Part No.	4-inch Part No.
Stem Seal							
17	1	Lip seal kit, EPDM (standard)	9611-92-0078	9611-92-0078	9611-92-0078	9611-92-0142	9611-92-0142
	1	Lip seal kit, NBR	9611-92-0079	9611-92-0079	9611-92-0079	9611-92-0143	9611-92-0143
	1	Lip seal kit, FPM	9611-92-0080	9611-92-0080	9611-92-0080	9611-92-0144	9611-92-0144
a	1	Lip seal, EPDM (standard)	9612-2806-01	9612-2806-01	9612-2806-01	9612-3088-01	9612-3088-01
	1	Lip seal, NBR	9612-2806-02	9612-2806-02	9612-2806-02	9612-3088-02	9612-3088-02
	1	Lip seal, FPM	9612-2806-03	9612-2806-03	9612-2806-03	9612-3088-03	9612-3088-03
b	1	Plate	9612-2805-01	9612-2805-01	9612-2805-01	9612-3087-01	9612-3087-01
c	1	Seal ring, EPDM (standard)	31353-0128-1	31353-0128-1	31353-0128-1	31353-0205-1	31353-0205-1
	1	Seal ring, NBR	31353-0128-2	31353-0128-2	31353-0128-2	31353-0205-2	31353-0205-2
	1	Seal ring, FPM	31353-0128-3	31353-0128-3	31353-0128-3	31353-0205-3	31353-0205-3

FEP Seal

17d	1	Washer	31353-0452-1	31353-0452-1	31353-0452-1	31353-0452-2	31353-0452-2
e	1	O-ring FEP/Silicone	9611-99-2909	9611-99-2909	9611-99-2909	9611-99-2910	9611-99-2910
f	1	Holder	31353-0453-1	31353-0453-1	31353-0453-1	31353-0454-1	31353-0454-1
g	1	Valve body packing	31353-0451-1	31353-0451-1	31353-0451-1	31353-0451-2	31353-0451-2
•	1	Service kit for alternative stem seal, EPDM	9611-92-0471	9611-92-0475	9611-92-0479	9611-92-0483	9611-92-0491
•	1	Service kit for alternative stem seal, NBR ...	9611-92-0472	9611-92-0476	9611-92-0480	9611-92-0484	9611-92-0492
•	1	Service kit for alternative stem seal, FPM ...	9611-92-0473	9611-92-0477	9611-92-0481	9611-92-0485	9611-92-0493
•	1	Service kit for alternative stem seal, FEP	9611-92-0474	9611-92-0478	9611-92-0482	9611-92-0486	9611-92-0494

Parts marked with • are included in the alternative stem seal service kit.

Valve Body Combinations:

Type 7



Type 9



Recommended Spare Parts: Service kit

Alfa Laval
8201 104th Street
Pleasant Prairie, WI 53158-0909
Telephone: 800-558-2060
Fax: 262-947-4724
www.us.flow.alfalaval.com