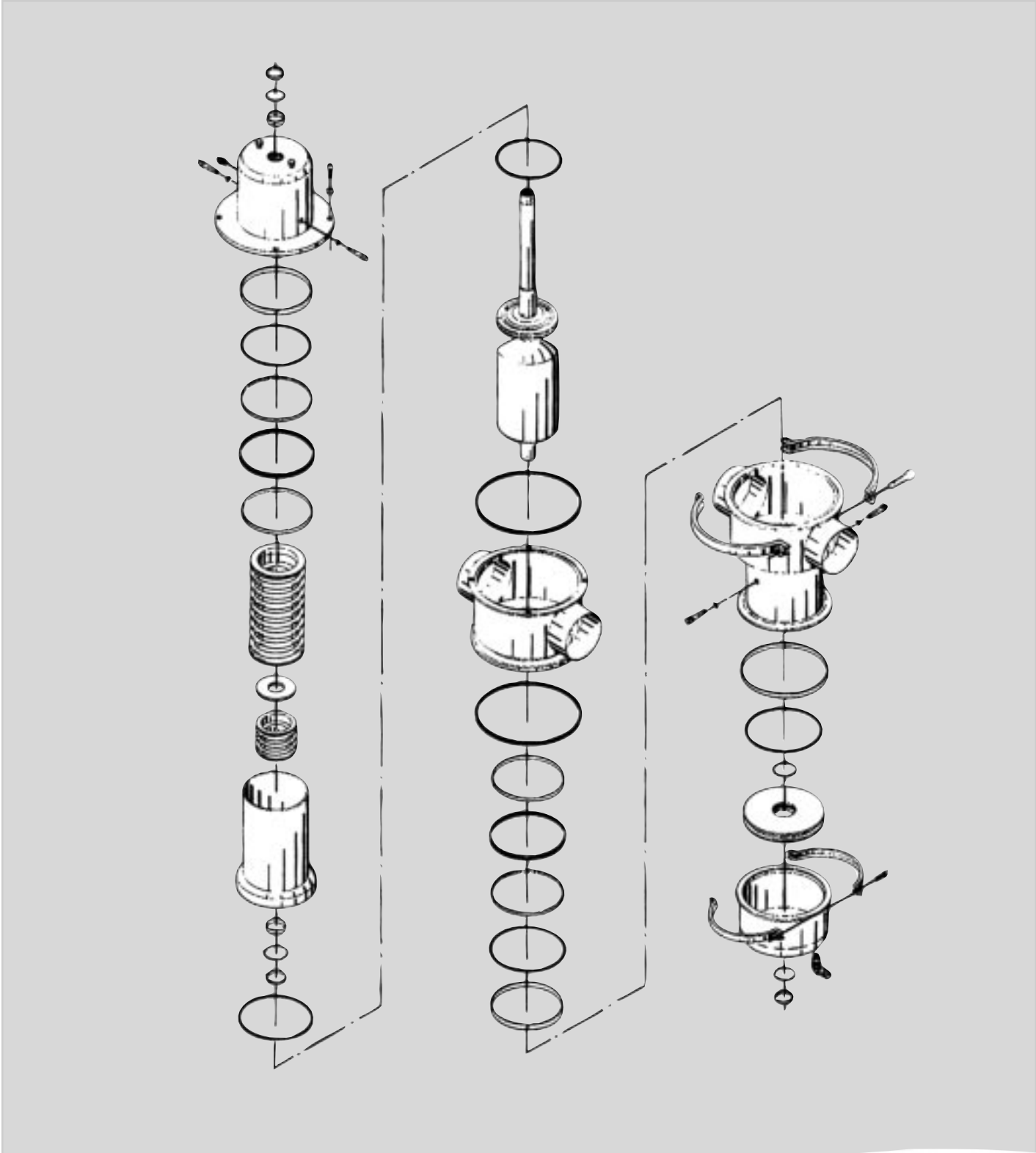
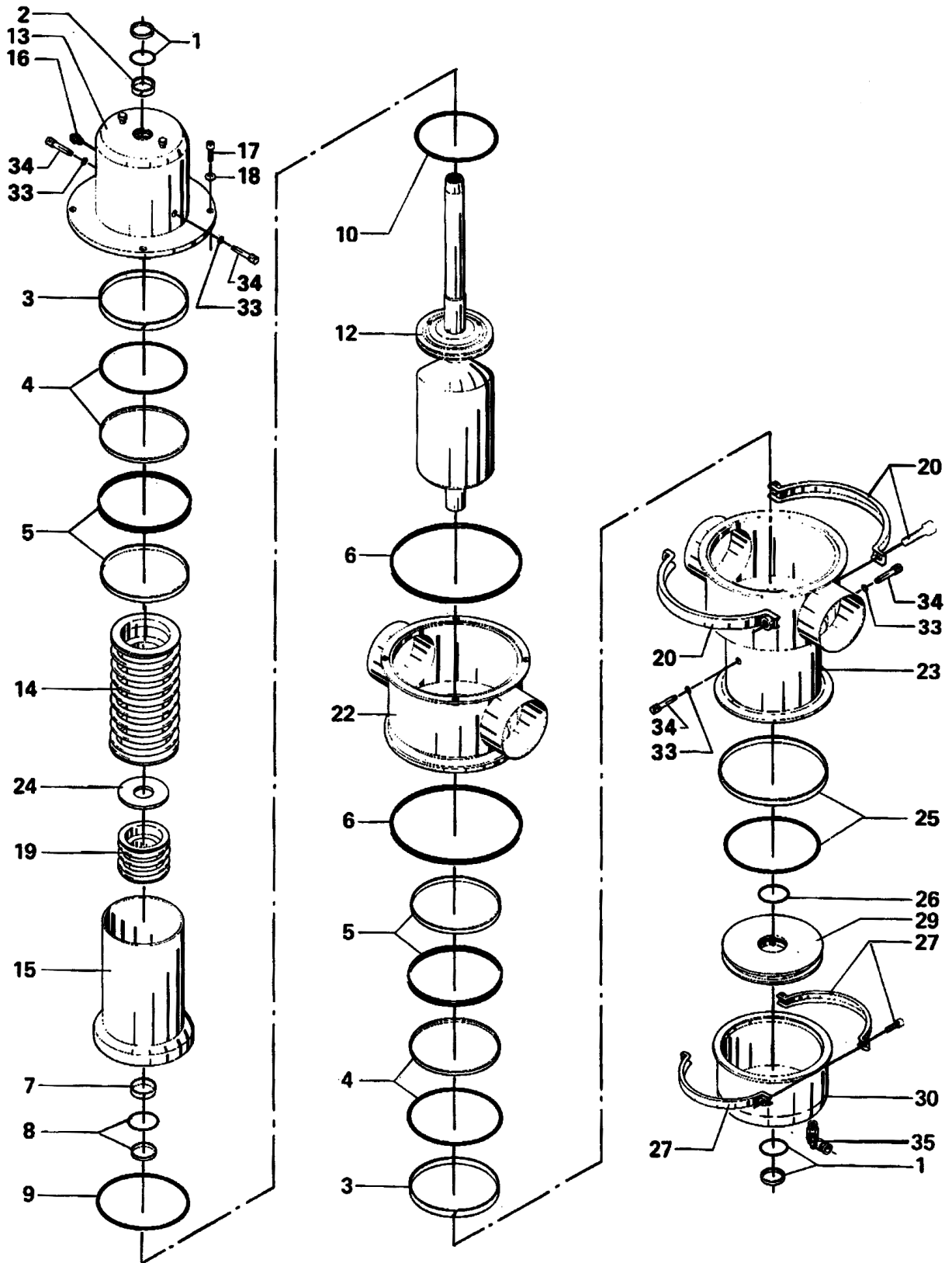


Spare Parts List

SMP-EC Mixproof Valve





Sanitary Mixproof Valve SMP-EC (2" - 2.5")

| Pos. | Qty. | Description | 2" Part No. | 2.5" Part No. |
|-------|------|---|----------------|------------------|
| 1♦□ | 2 | Glide ring seal, PTFE/NBR (standard) | 31801-2477-2 | 31801-2477-2 |
| 2♦□ | 1 | Guide ring, PTFE/carbon | 31357-0069-2 | 31357-0069-2 |
| 3♦□ | 2 | Guide ring, PTFE/carbon | 31357-0069-4 | 31357-0069-4 |
| 4♦□ | 2 | Glide ring seal, PTFE/EPDM (standard) | 31357-1010-2 | 31357-1010-2 |
| | 2 | Glide ring seal, PTFE/NBR | 31357-1010-1 | 31357-1010-1 |
| | 2 | Glide ring seal, PTFE/FPM | 31357-1010-3 | 31357-1010-3 |
| 5△♦●□ | 2 | Glide ring seal, PTFE/EPDM (standard) | 31357-1008-2 | 31357-1008-2 |
| | 2 | Glide ring seal, PTFE/NBR | 31357-1008-1 | 31357-1008-1 |
| | 2 | Glide ring seal, PTFE/FPM | 31357-1008-3 | 31357-1008-3 |
| 6♦□ | 2 | Seal ring/Packing, EPDM (standard) | 31357-0070-1 | 31357-0070-1 |
| | 2 | Seal ring/Packing, NBR | 31357-0070-2 | 31357-0070-2 |
| | 2 | Seal ring/Packing, FPM | 31357-0070-3 | 31357-0070-3 |
| 7♦□ | 1 | Guide ring, PTFE/carbon | 31357-0069-3 | 31357-0069-3 |
| 8♦□ | 1 | Glide ring seal, PTFE/EPDM (standard) | 31357-1016-2 | 31357-1016-2 |
| | 1 | Glide ring seal, PTFE/NBR | 31801-2477-3 | 31801-2477-3 |
| | 1 | Glide ring seal, PTFE/FPM | 31801-2477-9 | 31801-2477-9 |
| 9△♦●□ | 1 | O-ring, EPDM (standard) | 9611-99-2175 | 9611-99-2175 |
| | 1 | O-ring, NBR | 9611-99-2176 | 9611-99-2176 |
| | 1 | O-ring, FPM | 9611-99-2177 | 9611-99-2177 |
| 10●□ | 1 | "Full face" seal, EPDM (standard) | 31357-1408-1 | 31357-1408-1 |
| | 1 | "Full face" seal, NBR | 31357-1408-2 | 31357-1408-2 |
| | 1 | "Full face" seal, FPM | 31357-1408-3 | 31357-1408-3 |
| 12 | 1 | Valve plug, lower | 31357-0410-1 | 31357-0410-2 |
| 13 | 1 | Valve top (incl. pos. 33 + 34) | 31357-0422-1 | 31357-0422-2 |
| 14 | 1 | Spring assembly, upper | 31357-0455-1 | 31357-0455-1 |
| 15 | 1 | Valve plug, upper | 31357-0405-1 | 31357-0405-1 |
| 16 | 1 | Plug | 31353-0154-1 | 31353-0154-1 |
| 17 | 4 | Screw | 9611-99-0273 | 9611-99-0273 |
| 18 | 4 | Washer | 9611-99-1831 | 9611-99-1831 |
| 19 | 1 | Spring assembly, lower | 31357-0450-1 | 31357-0450-1 |
| 20 | 1 | Clamps and screws | 9611-31105-6 | 9611-31105-6 |

Alfa Laval

| Pos. | Qty. | Description | 2" Part No. | 2.5" Part No. |
|------|------|---|---------------------|---------------------|
| 22 | 1 | Valve body, upper, 1 port | 31357-0438-1 | 31357-0439-1 |
| | 1 | Valve body, upper, 2 ports | 31357-0438-2 | 31357-0439-2 |
| 23 | 1 | Valve body, lower, 1 port (incl. pos. 33 + 34) | 31357-0448-1 | 31357-0449-1 |
| | 1 | Valve body, lower, 2 ports (incl. pos. 33 + 34) | 31357-0448-2 | 31357-0449-2 |
| 24 | 1 | Washer | 31357-0460-1 | 31357-0460-1 |
| 25♦ | 1 | Glide ring seal, PTFE/NBR (standard) | 31801-2490-4 | 31801-2490-4 |
| 26♦ | 1 | O-ring, NBR | 223406-49 | 223406-49 |
| 27 | 1 | Clamps and screws | 9611-31105-5 | 961131-105-5 |
| 29 | 1 | Piston | 31357-0429-1 | 31357-0429-1 |
| 30 | 1 | Cylinder | 31357-0426-1 | 31357-0426-1 |
| 33 | 4 | O-ring (period 9603-) | 9611-99-3119 | 9611-99-3119 |
| | 4 | Seal ring (period -9603) | 9611-99-2566 | 9611-99-2566 |
| 34 | 4 | Flushing tube (period 9603-) | 31357-1017-1 | 31357-1017-1 |
| 35 | 1 | Air fitting | 881249420 | 881249420 |
| ● | 1 | Service kit A, EPDM "Full face" | 9611-92-0401 | 9611-92-0401 |
| ● | 1 | Service kit A, NBR "Full face" | 9611-92-0402 | 9611-92-0402 |
| ● | 1 | Service kit A, FPM "Full face" | 9611-92-0403 | 9611-92-0403 |

Parts marked with ● are included in service kit A.

| | | | | |
|---|---|--|---------------------|---------------------|
| □ | 1 | Service kit B, EPDM "Full face" | 9611-92-0404 | 9611-92-0404 |
| □ | 1 | Service kit B, NBR "Full face" | 9611-92-0405 | 9611-92-0405 |
| □ | 1 | Service kit B, FPM "Full face" | 9611-92-0406 | 9611-92-0406 |

Parts marked with □ are included in service kit B.

Recommended Spare Parts: Service kit

Sanitary Mixproof Valve SMP-EC (2" - 2.5")

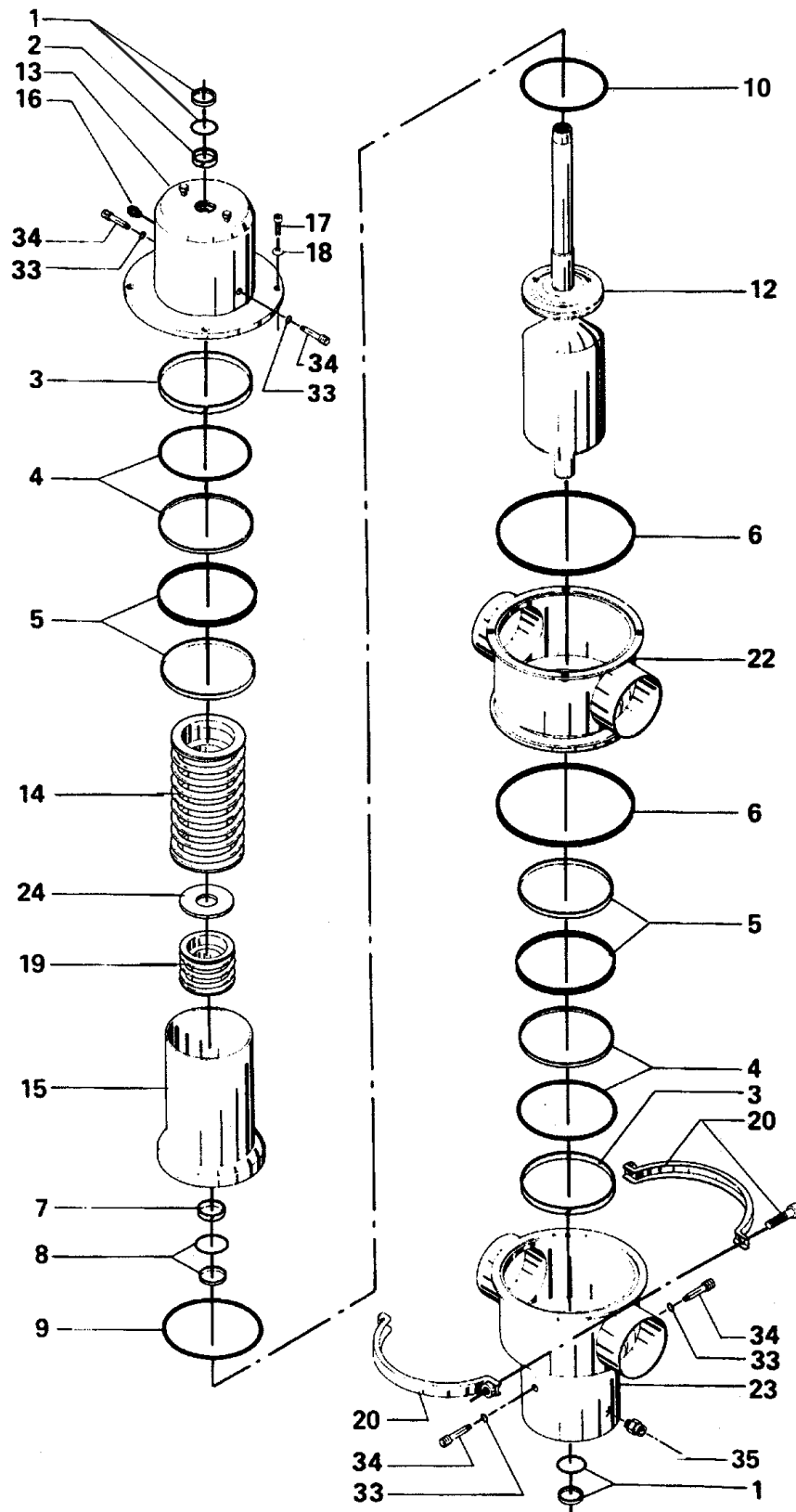
Alternative

| Pos. | Qty. | Description | 2" Part No. | 2.5" Part No. |
|------|------|---------------------------|----------------|------------------|
| 10Δ♦ | 1 | O-ring, EPDM | 9611-99-2184 | 9611-99-2184 |
| | 1 | O-ring, NBR | 9611-99-2185 | 9611-99-2185 |
| | 1 | O-ring, FPM | 9611-99-2186 | 9611-99-2186 |
| Δ | 1 | Service kit A, EPDM | 9611-92-0054 | 9611-92-0054 |
| Δ | 1 | Service kit A, NBR | 9611-92-0055 | 9611-92-0055 |
| Δ | 1 | Service kit A, FPM | 9611-92-0056 | 9611-92-0056 |

Parts marked with Δ are included in service kit A.

| | | | | |
|---|---|---------------------------|--------------|--------------|
| ♦ | 1 | Service kit B, EPDM | 9611-92-0063 | 9611-92-0063 |
| ♦ | 1 | Service kit B, NBR | 9611-92-0064 | 9611-92-0064 |
| ♦ | 1 | Service kit B, FPM | 9611-92-0065 | 9611-92-0065 |

Parts marked with ♦ are included in service kit B.



Sanitary Mixproof Valve SMP-EC (3" - 4")

| Pos. | Qty. | Description | 3" Part No. | 4" Part No. |
|-------|------|---|----------------|----------------|
| 1♦□ | 2 | Glide ring seal, PTFE/NBR (standard) | 31801-2477-2 | 31801-2477-2 |
| 2♦□ | 1 | Guide ring, PTFE/carbon | 31357-0069-2 | 31357-0069-2 |
| 3♦□ | 2 | Guide ring, PTFE/carbon | 31357-0069-5 | 31357-0069-5 |
| 4♦□ | 2 | Glide ring seal, PTFE/EPDM (standard) | 31357-1009-2 | 31357-1009-2 |
| | 2 | Glide ring seal, PTFE/NBR | 31357-1009-1 | 31357-1009-1 |
| | 2 | Glide ring seal, PTFE/FPM | 31357-1009-3 | 31357-1009-3 |
| 5△♦●□ | 2 | Glide ring seal, PTFE/EPDM (standard) | 31357-1007-2 | 31357-1007-2 |
| | 2 | Glide ring seal, PTFE/NBR | 31357-1007-1 | 31357-1007-1 |
| | 2 | Glide ring seal, PTFE/FPM | 31357-1007-3 | 31357-1007-3 |
| 6♦□ | 2 | Seal ring/Packing, EPDM (standard) | 31357-0170-1 | 31357-0170-1 |
| | 2 | Seal ring/Packing, NBR | 31357-0170-2 | 31357-0170-2 |
| | 2 | Seal ring/Packing, FPM | 31357-0170-3 | 31357-0170-3 |
| 7♦□ | 1 | Guide ring, PTFE/carbon | 31357-0069-3 | 31357-0069-3 |
| 8♦□ | 1 | Glide ring seal, PTFE/EPDM (standard) | 31357-1016-2 | 31357-1016-2 |
| | 1 | Glide ring seal, PTFE/NBR | 31801-2477-3 | 31801-2477-3 |
| | 1 | Glide ring seal, PTFE/FPM | 31801-2477-9 | 31801-2477-9 |
| 9△♦●□ | 1 | O-ring, EPDM (standard) | 9611-99-2178 | 9611-99-2178 |
| | 1 | O-ring, NBR | 9611-99-2179 | 9611-99-2179 |
| | 1 | O-ring, FPM | 9611-99-2180 | 9611-99-2180 |
| 10●□ | 1 | "Full face" seal, EPDM (standard) | 31357-1508-1 | 31357-1508-1 |
| | 1 | "Full face" seal, NBR | 31357-1508-2 | 31357-1508-2 |
| | 1 | "Full face" seal, FPM | 31357-1508-3 | 31357-1508-3 |
| 12 | 1 | Valve plug, lower | 31357-0520-1 | 31357-0520-2 |
| 13 | 1 | Valve top (incl. pos. 33 + 34) | 31357-0522-1 | 31357-0522-2 |
| 14 | 1 | Spring assembly, upper | 31357-0555-1 | 31357-0555-1 |
| 15 | 1 | Valve plug, upper | 31357-0505-1 | 31357-0505-1 |
| 16 | 1 | Plug | 31353-0154-1 | 31353-0154-1 |
| 17 | 4 | Screw | 9611-99-0273 | 9611-99-0273 |
| 18 | 4 | Washer | 9611-99-1831 | 9611-99-1831 |
| 19 | 1 | Spring assembly, lower | 31357-0550-1 | 31357-0550-1 |
| 20 | 1 | Clamps and screws | 9611-31105-8 | 9611-31-05-8 |
| 22 | 1 | Valve body, upper, 1 port | 31357-0568-1 | 31357-0569-1 |
| | 1 | Valve body, upper, 2 ports | 31357-0568-2 | 31357-0569-2 |
| 23 | 1 | Valve body, lower, 1 port (incl. pos. 33 + 34) | 31357-0572-1 | 31357-0573-1 |
| | 1 | Valve body, lower, 2 ports (incl. pos. 33 + 34) | 31357-0572-2 | 31357-0573-2 |
| 24 | 1 | Washer | 31357-0561-1 | 31357-0561-1 |
| 33 | 4 | O-ring (period 9603-) | 9611-99-3119 | 9611-99-3119 |
| | 4 | Seal ring (period -9603) | 9611-99-2566 | 9611-99-2566 |
| 34 | 4 | Flushing tube (period 9603-) | 31357-1017-1 | 31357-1017-1 |
| 35 | 1 | Air fitting | 881249420 | 881249420 |
| ● | 1 | Service kit A, EPDM "Full face" | 9611-92-0407 | 9611-92-0407 |
| ● | 1 | Service kit A, NBR "Full face" | 9611-92-0408 | 9611-92-0408 |
| ● | 1 | Service kit A, FPM "Full face" | 9611-92-0409 | 9611-92-0409 |

Parts marked with ● are included in service kit A.

| | | | | |
|---|---|---------------------------------------|--------------|--------------|
| □ | 1 | Service kit B, EPDM "Full face" | 9611-92-0413 | 9611-92-0413 |
| □ | 1 | Service kit B, NBR "Full face" | 9611-92-0414 | 9611-92-0405 |
| □ | 1 | Service kit B, FPM "Full face" | 9611-92-0415 | 9611-92-0415 |

Parts marked with □ are included in service kit B.

Recommended Spare Parts: Service kit

Alfa Laval

Alternative

| Pos. | Qty. | Description | 3" Part No. | 4" Part No. |
|------|------|---------------------------|----------------|----------------|
| 10Δ♦ | 1 | O-ring, EPDM | 9611-99-2187 | 9611-99-2187 |
| | 1 | O-ring, NBR | 9611-99-2188 | 9611-99-2188 |
| | 1 | O-ring, FPM | 9611-99-2189 | 9611-99-2189 |
| Δ | 1 | Service kit A, EPDM | 9611-92-0057 | 9611-92-0057 |
| Δ | 1 | Service kit A, NBR | 9611-92-0058 | 9611-92-0058 |
| Δ | 1 | Service kit A, FPM | 9611-92-0059 | 9611-92-0059 |

Parts marked with Δ are included in service kit A.

| | | | | |
|---|---|---------------------------|--------------|--------------|
| ♦ | 1 | Service kit B, EPDM | 9611-92-0066 | 9611-92-0066 |
| ♦ | 1 | Service kit B, NBR | 9611-92-0067 | 9611-92-0067 |
| ♦ | 1 | Service kit B, FPM | 9611-92-0068 | 9611-92-0068 |

Parts marked with ♦ are included in service kit B.

Recommended Spare Parts: Service kit

Alfa Laval
8201 104th Street
Pleasant Prairie, WI 53158-0909
Telephone: 800-558-2060
Fax: 262-947-4724
www.us.flow.alfalaval.com