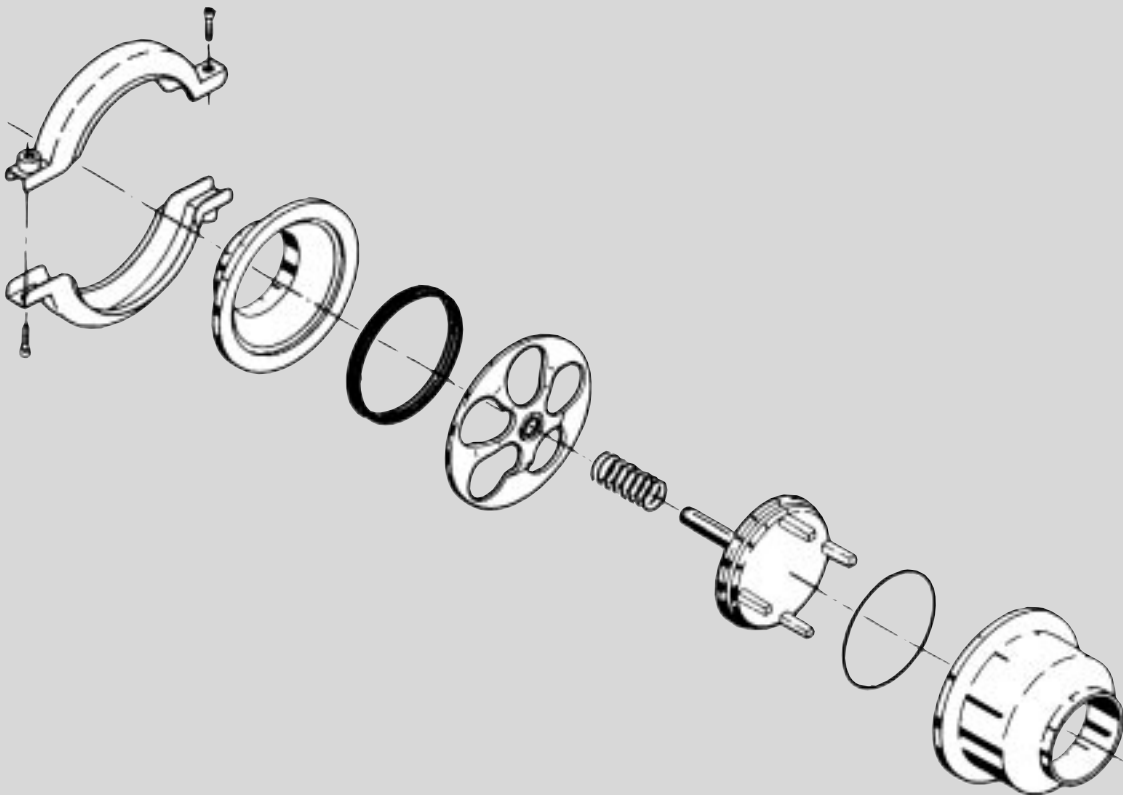
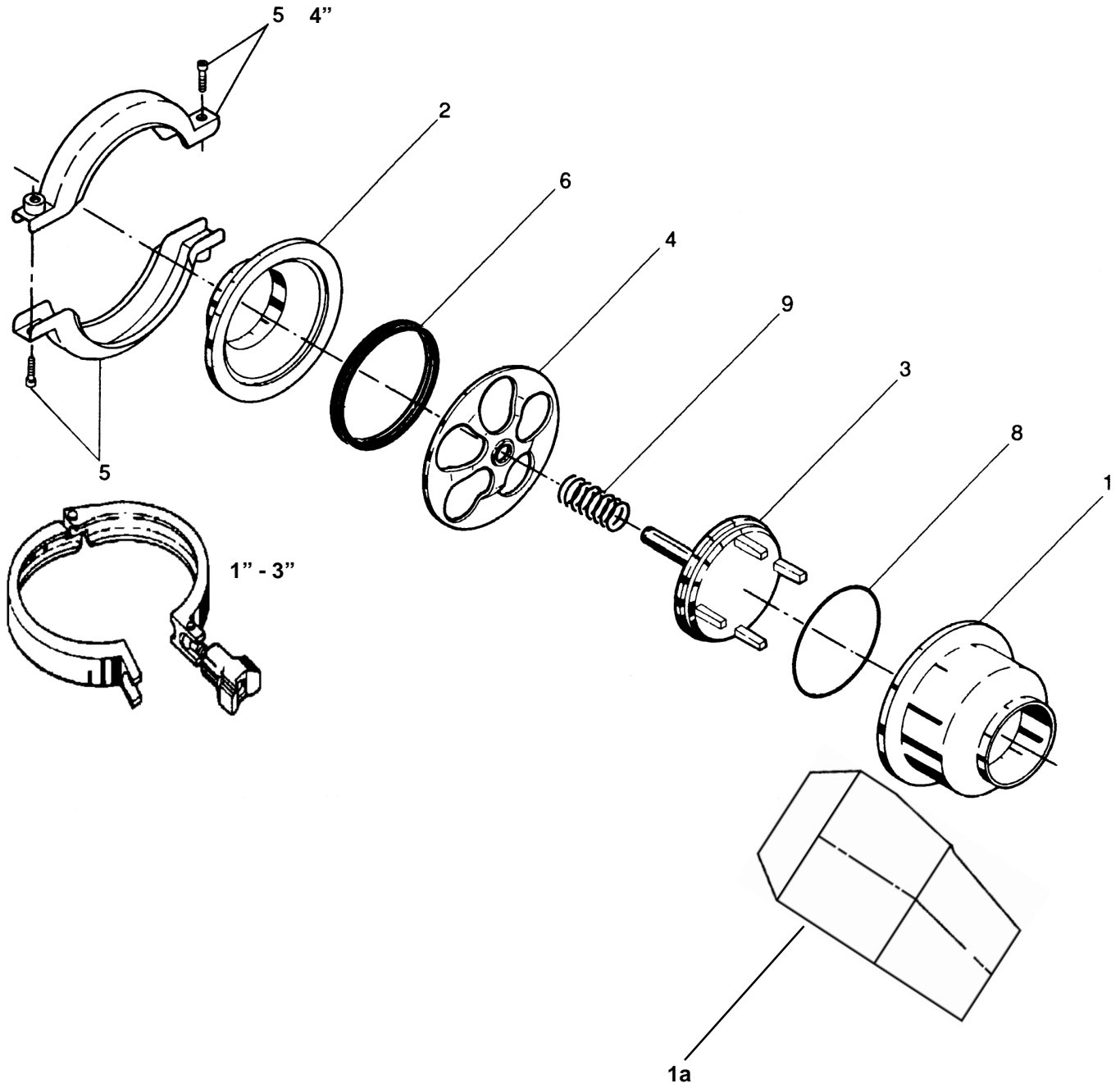


Spare Parts List

LKC-2 Non-Return Valve





Non-Return Valve LKC-2 (Industrial)

Iso for welding - AISI 316

Pos.	Qty.	Description	1" Part No.	1.5" Part No.	2" Part No.	2.5" Part No.	3" Part No.	4" Part No.
1	1	Valve body (Vertical)	9612-2202-07	9612-2202-08	9612-2202-09	9612-2202-10	9612-2202-11	9612-2202-12
	1	Valve body (Horizontal)	Contact Alfa Laval	Contact Alfa Laval	Contact Alfa Laval	Contact Alfa Laval	Contact Alfa Laval	Contact Alfa Laval
2	1	Welding liner	9612-2201-07	9612-2201-08	9612-2201-09	9612-2201-10	9612-2201-11	9612-2201-12
3	1	Valve cone	9612-2207-01	9612-2207-02	9612-2207-03	9612-2207-04	9612-2207-05	9612-2207-06
4	1	Guide plate	9612-3709-01	9612-3709-02	9612-3709-03	9612-3709-04	9612-3709-05	9612-3709-06
5	1	Heavy duty clamp (1-3")	9611-311-052	9611-311-053	9611-311-054	9611-311-055	9611-311-056	N/A
	1	Clamp ring (4")	N/A	N/A	N/A	N/A	N/A	9611-31-105-7
6Δ	1	Seal ring, EPDM	9611-25-315-0	9611-25-315-1	9611-25-315-2	9611-25-315-3	9611-25-315-4	9611-25-315-6
	1	Seal ring, NBR	9611-25-381-0	9611-25-381-1	9611-25-381-2	9611-25-381-3	9611-25-381-4	9611-25-381-6
	1	Seal ring, FPM	9611-25-382-0	9611-25-382-1	9611-25-382-2	9611-25-382-3	9611-25-382-4	9611-25-382-6
8Δ	1	O-ring, EPDM	9611-99-0063	9611-99-0015	9611-99-0064	9611-99-0065	9611-99-0066	9611-99-0067
	1	O-ring, NBR	9611-99-1410	9611-99-1411	9611-99-1412	9611-99-1413	9611-99-1414	9611-99-1415
	1	O-ring, FPM	9611-99-1417	9611-99-1418	9611-99-1419	9611-99-1420	9611-99-1421	9611-99-1422
9	1	Spring	9611-99-1778	9611-99-1779	9611-99-1780	9611-99-1781	9611-99-1782	9611-99-1783

Parts marked with Δ are included in the LKC-2 Service kit.

Iso for welding - AISI 304

1	1	Valve body (Vertical)	9612-2202-01	9612-2202-02	9612-2202-03	9612-2202-04	9612-2202-05	9612-2202-06
	1	Valve body (Horizontal)	Contact Alfa Laval	Contact Alfa Laval	Contact Alfa Laval	Contact Alfa Laval	Contact Alfa Laval	Contact Alfa Laval
2	1	Welding liner	9612-2201-01	9612-2201-02	9612-2201-03	9612-2201-04	9612-2201-05	9612-2201-06
3	1	Valve cone	9612-2207-01	9612-2207-02	9612-2207-03	9612-2207-04	9612-2207-05	9612-2207-06
4	1	Guide plate	9612-3709-01	9612-3709-02	9612-3709-03	9612-3709-04	9612-3709-05	9612-3709-06
5	1	Heavy duty clamp (1-3")	9611-311-052	9611-311-053	9611-311-054	9611-311-055	9611-311-056	N/A
	1	Clamp ring (4")	N/A	N/A	N/A	N/A	N/A	9611-31-105-7
6Δ	1	Seal ring, EPDM	9611-25-315-0	9611-25-315-1	9611-25-315-2	9611-25-315-3	9611-25-315-4	9611-25-315-6
	1	Seal ring, NBR	9611-25-381-0	9611-25-381-1	9611-25-381-2	9611-25-381-3	9611-25-381-4	9611-25-381-6
	1	Seal ring, FPM	9611-25-382-0	9611-25-382-1	9611-25-382-2	9611-25-382-3	9611-25-382-4	9611-25-382-6
8Δ	1	O-ring, EPDM	9611-99-0063	9611-99-0015	9611-99-0064	9611-99-0065	9611-99-0066	9611-99-0067
	1	O-ring, NBR	9611-99-1410	9611-99-1411	9611-99-1412	9611-99-1413	9611-99-1414	9611-99-1415
	1	O-ring, FPM	9611-99-1417	9611-99-1418	9611-99-1419	9611-99-1420	9611-99-1421	9611-99-1422
9	1	Spring	9611-99-1778	9611-99-1779	9611-99-1780	9611-99-1781	9611-99-1782	9611-99-1783
Δ	1	Service kit for LKC-2, EPDM ..	9611-92-4005	9611-92-4006	9611-92-4007	9611-92-4008	9611-92-4009	9611-92-4010
Δ	1	Service kit for LKC-2, NBR	9611-92-4011	9611-92-4012	9611-92-4013	9611-92-4014	9611-92-4015	9611-92-4016
Δ	1	Service kit for LKC-2, FPM	9611-92-4017	9611-92-4018	9611-92-4019	9611-92-4020	9611-92-4021	9611-92-4022

Parts marked with Δ are included in the LKC-2 Service kit.

Recommended Spare Parts: Service kit

Alfa Laval

Iso for welding - AISI 316

Pos.	Qty.	Description	1" Part No.	1.5" Part No.	2" Part No.	2.5" Part No.	3" Part No.	4" Part No.
1	1	Valve body (Vertical)	Contact Alfa Laval	Contact Alfa Laval	Contact Alfa Laval	Contact Alfa Laval	Contact Alfa Laval	Contact Alfa Laval
	1	Valve body (Horizontal)	Contact Alfa Laval	Contact Alfa Laval	Contact Alfa Laval	Contact Alfa Laval	Contact Alfa Laval	Contact Alfa Laval
2	1	Welding liner	9612-2201-07	9612-2201-08	9612-2201-09	9612-2201-10	9612-2201-11	9612-2201-12
3	1	Valve cone	9612-2207-07	9612-2207-08	9612-2207-09	9612-2207-10	9612-2207-11	9612-2207-12
4	1	Guide plate	9612-2208-07	9612-2208-08	9612-2208-09	9612-2208-10	9612-2208-11	9612-2208-12
5	1	Heavy duty clamp (1-3")	9612-0112-02	9612-0112-03	9612-0112-04	9612-0112-05	8818027	N/A
	1	Clamp ring (4")	N/A	N/A	N/A	N/A	N/A	9611-31-105-7
6Δ	1	Seal ring, EPDM	9611-25-315-0	9611-25-315-1	9611-25-315-2	9611-25-315-3	9611-25-315-4	9611-25-315-6
	1	Seal ring, NBR	9611-25-381-0	9611-25-381-1	9611-25-381-2	9611-25-381-3	9611-25-381-4	9611-25-381-6
	1	Seal ring, FPM	9611-25-382-0	9611-25-382-1	9611-25-382-2	9611-25-382-3	9611-25-382-4	9611-25-382-6
8Δ	1	O-ring, EPDM	9611-99-0063	9611-99-0015	9611-99-0064	9611-99-0065	9611-99-0066	9611-99-0067
	1	O-ring, NBR	9611-99-1410	9611-99-1411	9611-99-1412	9611-99-1413	9611-99-1414	9611-99-1415
	1	O-ring, FPM	9611-99-1417	9611-99-1418	9611-99-1419	9611-99-1420	9611-99-1421	9611-99-1422
9	1	Spring	9611-99-1778	9611-99-1779	9611-99-1780	9611-99-1781	9611-99-1782	9611-99-1783

Parts marked with Δ are included in the LKC-2 Service kit.

Iso for welding - AISI 304

1	1	Valve body (Vertical)	Contact Alfa Laval	Contact Alfa Laval	Contact Alfa Laval	Contact Alfa Laval	Contact Alfa Laval	Contact Alfa Laval
	1	Valve body (Horizontal)	Contact Alfa Laval	Contact Alfa Laval	Contact Alfa Laval	Contact Alfa Laval	Contact Alfa Laval	Contact Alfa Laval
2	1	Welding liner	9612-2201-01	9612-2201-02	9612-2201-03	9612-2201-04	9612-2201-05	9612-2201-06
3	1	Valve cone	9612-2207-07	9612-2207-08	9612-2207-09	9612-2207-10	9612-2207-11	9612-2207-12
4	1	Guide plate	9612-2208-07	9612-2208-08	9612-2208-09	9612-2208-10	9612-2208-11	9612-2208-12
5	1	Heavy duty clamp (1-3")	9612-0112-02	9612-0112-03	9612-0112-04	9612-0112-05	881-8027	N/A
	1	Clamp ring (4")	N/A	N/A	N/A	N/A	N/A	9611-31-105-7
6Δ	1	Seal ring, EPDM	9611-25-315-0	9611-25-315-1	9611-25-315-2	9611-25-315-3	9611-25-315-4	9611-25-315-6
	1	Seal ring, NBR	9611-25-381-0	9611-25-381-1	9611-25-381-2	9611-25-381-3	9611-25-381-4	9611-25-381-6
	1	Seal ring, FPM	9611-25-382-0	9611-25-382-1	9611-25-382-2	9611-25-382-3	9611-25-382-4	9611-25-382-6
8Δ	1	O-ring, EPDM	9611-99-0063	9611-99-0015	9611-99-0064	9611-99-0065	9611-99-0066	9611-99-0067
	1	O-ring, NBR	9611-99-1410	9611-99-1411	9611-99-1412	9611-99-1413	9611-99-1414	9611-99-1415
	1	O-ring, FPM	9611-99-1417	9611-99-1418	9611-99-1419	9611-99-1420	9611-99-1421	9611-99-1422
9	1	Spring	9611-99-1778	9611-99-1779	9611-99-1780	9611-99-1781	9611-99-1782	9611-99-1783
Δ	1	Service kit for LKC-2, EPDM ...	9611-92-4005	9611-92-4006	9611-92-4007	9611-92-4008	9611-92-4009	9611-92-4010
Δ	1	Service kit for LKC-2, NBR	9611-92-4011	9611-92-4012	9611-92-4013	9611-92-4014	9611-92-4015	9611-92-4016
Δ	1	Service kit for LKC-2, FPM	9611-92-4017	9611-92-4018	9611-92-4019	9611-92-4020	9611-92-4021	9611-92-4022

Parts marked with Δ are included in the LKC-2 Service kit.

Recommended Spare Parts: Service kit

Alfa Laval
8201 104th Street
Pleasant Prairie, WI 53158-0909
Telephone: 800-558-2060
Fax: 262-947-4724
www.us.flow.alfalaval.com