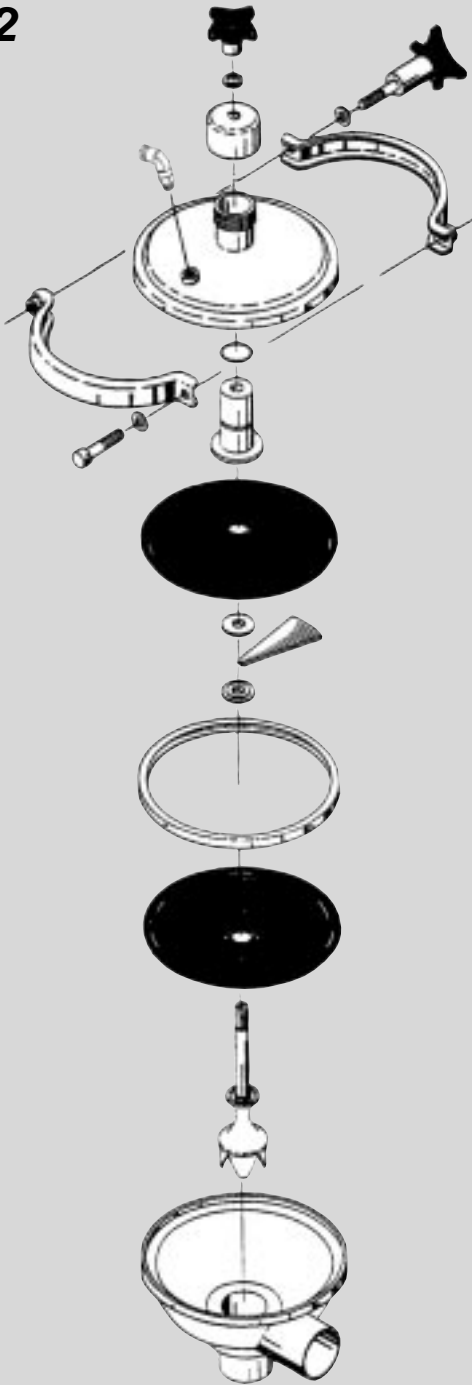
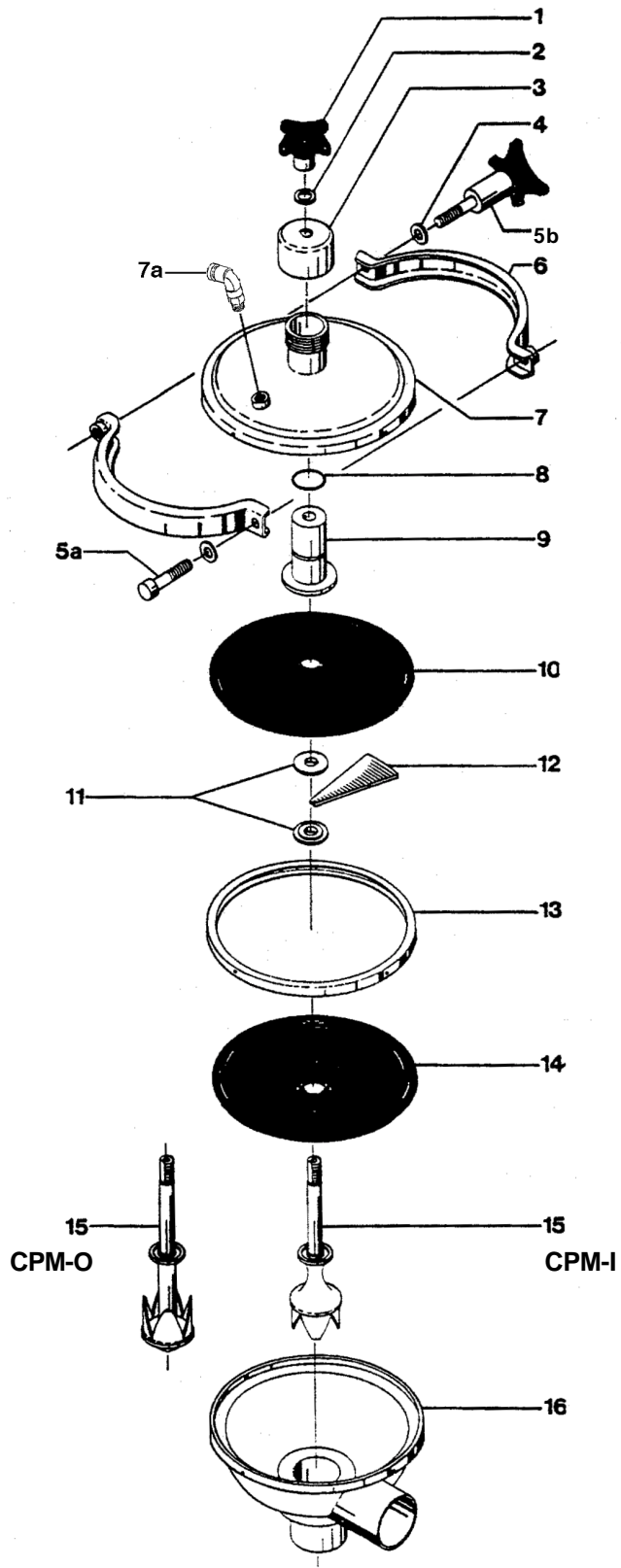


Spare Parts List

CPM-2 Constant Pressure Modulating Valve

Polished
CPMI-2 & CPMO-2





Constant Pressure Modulating Valve CPMI-2 & CPMO-2 (Polished)

Pos.	Qty.	Description	CPMI-2-Kv23 Part No.	CPMO-2-Kv23 Part No.	CPMI-2-Kv2/15 Part No.	CPMO-2-Kv2/15 Part No.
1	1	Top Handle	9611-99-2958	9611-99-2958	9611-99-2958	9611-99-2958
2	1	Washer	9611-99-2559	9611-99-2559	9611-99-2559	9611-99-2559
3	1	Top	31356-0003-4	31356-0003-4	31356-0003-4	31356-0003-4
4	2	Washer	9611-99-0786	9611-99-0786	9611-99-0786	9611-99-0786
5a	1	Screw	9611-99-1222	9611-99-1222	9611-99-1222	9611-99-1222
5b	1	Clamp handle	9612-3370-01	9612-3370-01	9612-3370-01	9612-3370-01
6	2	Clamp	9612-3352-01	9612-3352-01	9612-3352-01	9612-3352-01
7	1	Cover	31356-0067-1	31356-0067-1	31356-0067-1	31356-0067-1
7a	1	Air fitting	881-39750	881-39750	881-39750	881-39750
8Δ	1	O-ring, NBR (standard)	223406-49	223406-49	223406-49	223406-49
	1	O-ring, FPM	9611-99-2253	9611-99-2253	9611-99-2253	9611-99-2253
9	1	Guide	31356-0072-2	31356-0072-2	31356-0072-2	31356-0072-2
10Δ	1	Upper diaphragm, NBR (standard)	31356-0014-2	31356-0014-2	31356-0014-2	31356-0014-2
	1	Upper diaphragm, EPDM/PTFE	31356-0014-4	31356-0014-4	31356-0014-4	31356-0014-4
	1	Upper diaphragm, PTFE	9612-3057-02	9612-3057-02	9612-3057-02	9612-3057-02
11	2	Inner ring	31356-0063-1	31356-0063-1	31356-0063-1	31356-0063-1
12	12	Support sector	31356-0062-1	31356-0062-1	31356-0062-1	31356-0062-1
13	1	Outer ring	9612-3058-01	9612-3058-01	9612-3058-01	9612-3058-01
14Δ	1	Lower diaphragm, EPDM/PTFE (standard)	9612-3066-01	9612-3066-01	9612-3066-01	9612-3066-01
	1	Lower diaphragm, PTFE	9612-3057-01	9612-3057-01	9612-3057-01	9612-3057-01
15	1	Valve plug	9612-3059-01	9612-3060-01	9612-3061-01	9612-3062-01
16	1	Valve body, weld	9612-3340-01	9612-3341-01	9612-3342-01	9612-3342-01
Δ	1	Service kit for CPM valve	9611-92-0218	9611-92-0218	9611-92-0218	9611-92-0218

Parts marked with Δ are included in CPM valve service kit.

Alfa Laval

Alfa Laval

8201 104th Street
Pleasant Prairie, WI 53158-0909
Telephone: 800-558-2060
Fax: 262-947-4724
www.us.flow.alfalaval.com