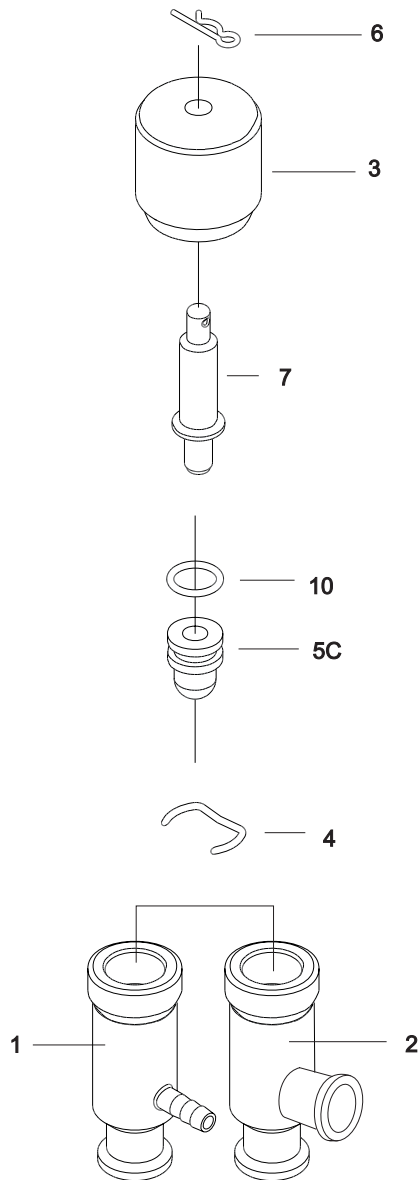


660 Manual Valve

2



660 Manual Valve

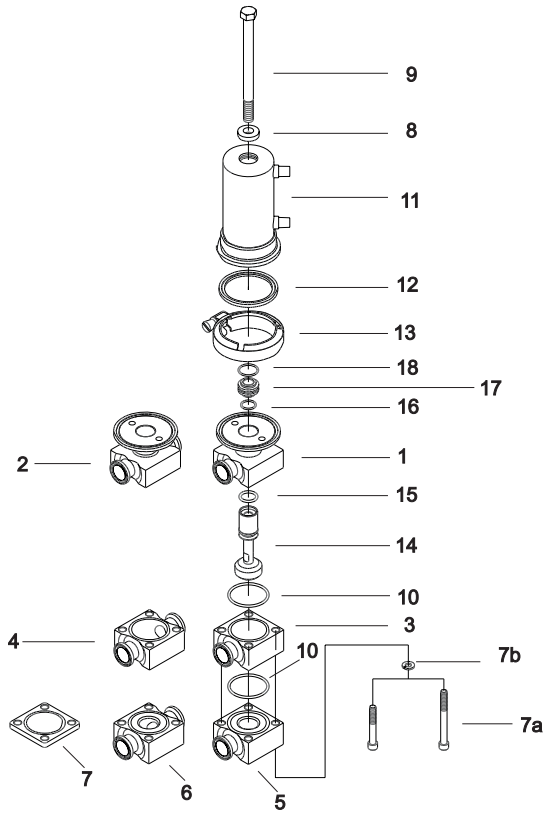
Pos.	Qty.	Denomination	Code No.
1	1	Valve body 1/2 clamp x 1/4 hose barb	770920
2	1	Valve body 1/2 x 1/2 clamp	773112
3	1	Handle UHMW	750544
3	1	Handle aluminum bronze	751693
4	1	Clip	750551
5C	● 1	PTFE plug w/ o ring	750557
6	1	Pin	750526
7	1	Stem	771428
10	● 1	Plug o ring for #5c plug only	750173

- included in Service Kit

- Service kit 9613990135

655 Air Actuated Divert Valves

4



655 Air Actuated Divert Valves

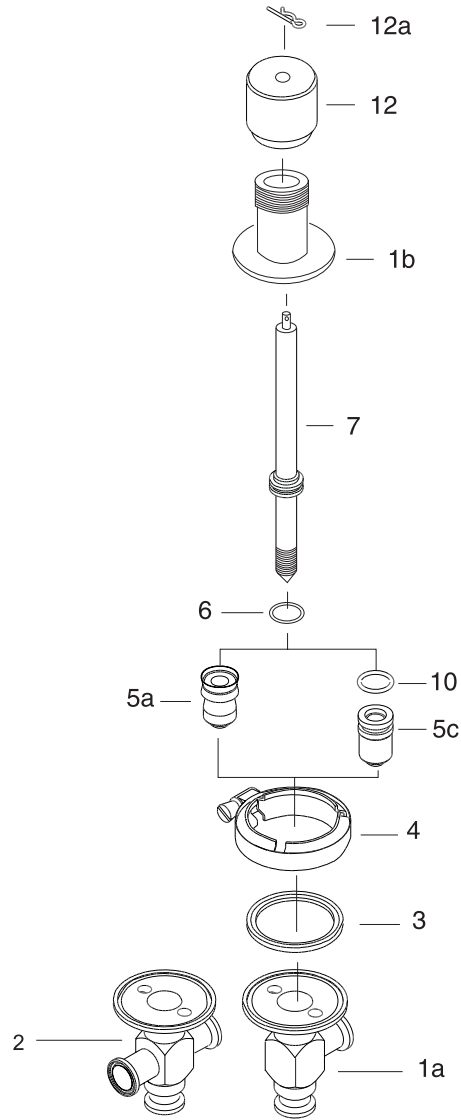
Pos.	Qty.	Denomination	1/2"	3/4"
1	1	A stage valve body (tee)	772026	772029
3	1	B stage valve body (tee)	772033	772037
5	1	C stage valve body (tee)	772043	772044
7A	4	Cap screw	180712	180712
7B	4	Lock washer	189985	189985
8	1	Washer	751713	751713
9	1	Bolt	180717	180717
10	● 2	O-ring BUNA	751740	751740
10	● 2	O-ring EPDM	750415	750415
10	● 2	O-ring SFY	751714	751714
11	1	Actuator type 10	750422	750422
11	1	Actuator type 20	750429	750429
11	1	Actuator type 30	750430	750430
12	● 1	Gasket BUNA	290285	290285
12	● 1	Gasket EPDM	290105	290105
12	● 1	Gasket SFY	3104694	3104694
13	1	Clamp	755035	755035
14	1	Stem BUNA	772007	772007
14	1	Stem EPDM	770893	770893
14	1	Stem SFY	772000	772000
15	● 1	O-ring BUNA	755357	755357
15	● 1	O-ring EPDM	750037	750037
15	● 1	O-ring SFY	750173	750173
16	● 1	O-ring BUNA	755542	755542
16	● 1	O-ring EPDM	750728	750728
16	● 1	O-ring SFY	751715	751715
17	1	Stem bushing	762951	762951
18	● 1	O-ring BUNA	750532	750532
18	● 1	O-ring EPDM	751664	751664
18	● 1	O-ring SFY	750401	750401

● included in Service Kit

	1/2"	3/4"
● Buna	9613990147	9613990147
● EPDM	9613990148	9613990148
● SFY	9613990149	9613990149

650 Manual Shut-Off Valves

6



650 Manual Shut-Off Valves

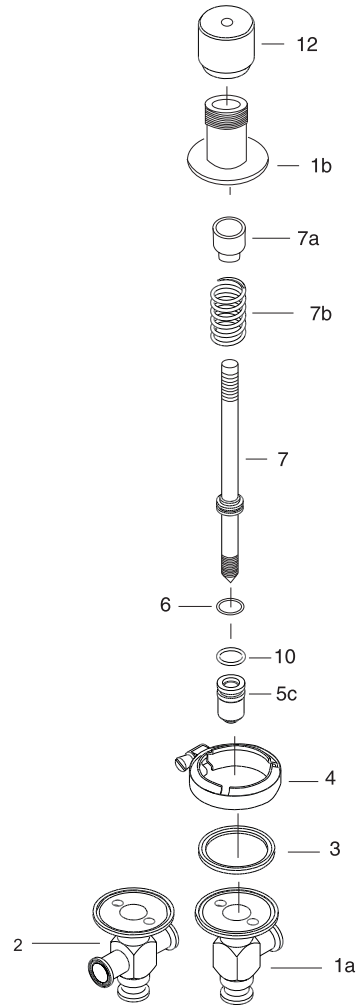
Pos.	Qty.	Denomination	1/2"	3/4"
1A	1	Lower body (tee)	770782	770845
1B	1	Bonnet	750506	750506
2	1	Lower body (cross)	770763	770769
3	● 1	Gasket SFY	3104694	3104694
4	1	Clamp	755035	755035
5A	● 1	PTFE plug w/lip seal	750480	750480
5B	● 1	Viton plug w/ lip seal (type 10)	750666	750666
5C	● 1	PTFE plug w/ O-ring	750598	750598
6	● 1	Stem O-ring SFY	290173	290173
7	1	Stem	771430	771430
10	● 1	Plug o ring #5c plug only	750173	750173
12A	1	Cotter pin	750526	750526
12	1	Handle	750501	750501

- included in Service Kit

	1/2"	3/4"
● "A"	9613990136	9613990136
● "B"	9613990137	9613990137
● "C" (for type 10)	9613990138	9613990138
● "C" (for type 30)	9613990139	9613990139

650 Manual Relief Valves

8



650 Manual Relief Valves

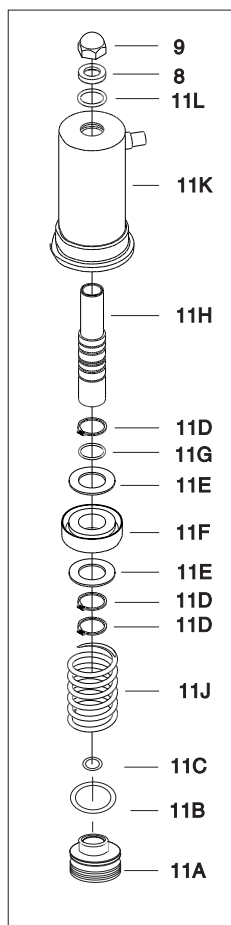
Pos.	Qty.	Denomination	1/2"	3/4"
1A	1	Lower body (tee)	770782	770845
1B	1	Bonnet	750506	750506
2	1	Lower body (cross)	770763	770769
3	● 1	Gasket SFY	3104694	3104694
4	1	Clamp	755035	755035
5A	● 1	PTFE plug w/lip seal	750480	750480
5B	● 1	Viton plug w/ lip seal (type 10)	750666	750666
5C	● 1	PTFE plug w/ o ring	750598	750598
6	1	Stem O-ring SFY	290173	290173
7A	1	Spring spacer	750498	750498
7B	1	Spring	750491	750491
10	● 1	Plug o ring #5c plug only	750173	750173
12A	1	Cotter pin	750526	750526
12	1	Handle	750501	750501

- included in Service Kit

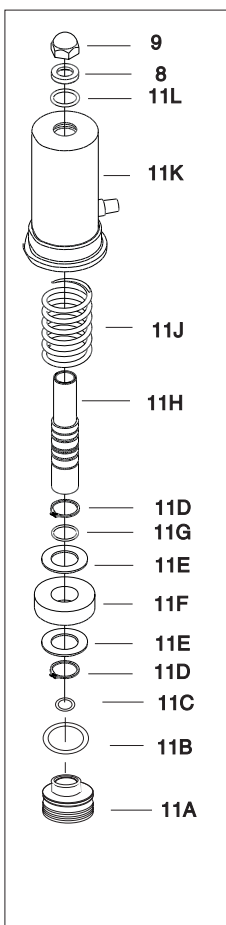
	1/2"	3/4"
● "A"	9613990136	9613990136
● "B"	9613990137	9613990137
● "C" (for type 10)	9613990138	9613990138
● "C" (for type 30)	9613990139	9613990139

650 and 655 Valve Actuators

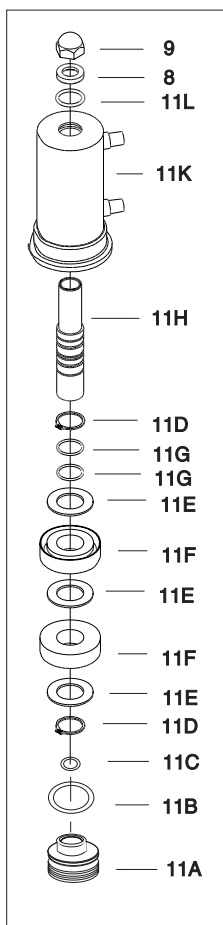
10



Type 10 Actuator



Type 20 Actuator



Type 30 Actuator

650 and 655 Valve Actuators

Pos.	Qty.	Denomination	Type 10	Type 20	Type 30
8	1	Stem washer	750407	750407	750407
9	1	Acorn nut	182349	182349	182349
11	1	Actuator complete	750422	750429	750430
11A	1	Actuator bonnet	750408	750408	750408
11B ●	1	Outer bonnet O-ring	755518	755518	755518
11C ●	1	Inner bonnet O-ring	750604	750604	750604
11D ●	3	Retaining ring	750413	750413	750413
11E ●	2	Piston washer	750323	750323	750323
11F	1	Piston	761846	761846	761846
11G ●	1	Piston O-ring	750401	750401	750401
11H	1	Stem sleeve	761848	761848	761848
11J	1	Spring	750599	750599	N/A
11K	1	Cylinder	750436	750438	750451
11L ●	1	Stem sleeve O-ring	290173	290173	290173

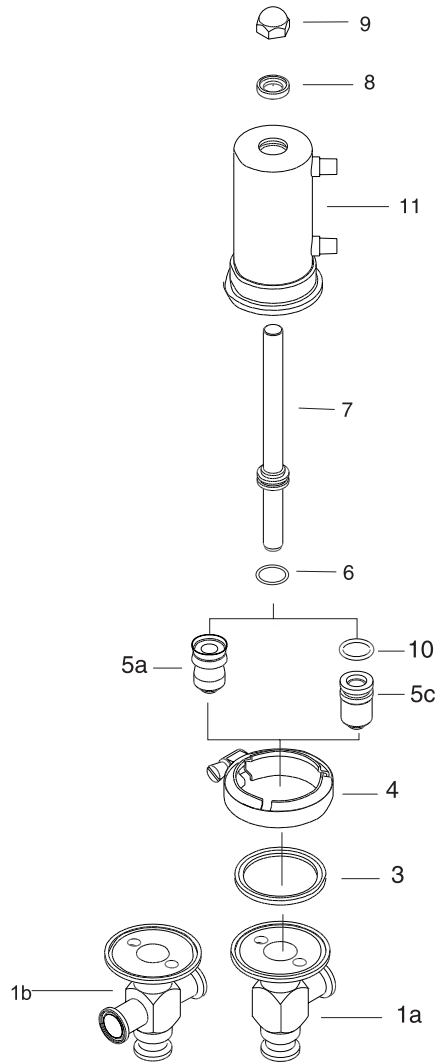
- included in Service Kit

Type 10 Type 20 Type 30

- Service kit 9613990144 9613990145 9613990146

650 Air Actuated Shut-Off Valves

12



650 Air Actuated Shut-Off Valves

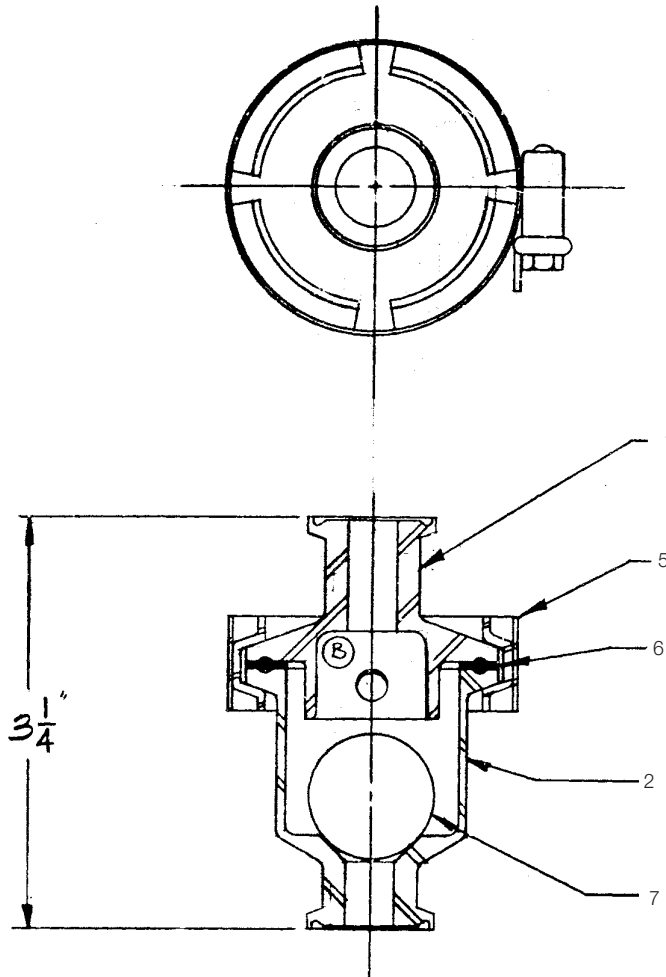
Pos.	Qty.	Denomination	Code No.
1	1	Valve body tee type clamp 1/2"	770782
1	1	Valve bdy tee type clamp 3/4"	770845
2	1	Valve body cross type clamp 1/2"	770763
2	1	Valve body cross type clamp 3/4"	770769
3	● 1	Body gasket	3104694
4	1	Body clamp	755035
5A	● 1	PTFE plug lip seal for 10 body	750480
5B	● 1	Viton lip seal for 10 body	750666
5C	● 1	PTFE plug w/o ring for 10 body	750598
5C	● 1	PTFE plug w/o ring for 30 body	751786
6	● 1	Stem o ring	750401
7	1	Stem	770783
8	1	Stem washer	750407
9	1	Acorn nut	182349
10	1	Plug o ring for 5c(plug only)	290173
11	1	Actuator type 10	750422
11	1	Actuator type 20	750429
11	1	Actuator type 30	750430

- included in Service Kit

- "A" 9613990140
- "B" 9613990141
- "C" (for type 10) 9613990142
- "C" (for type 30) 9613990143

C45MP Check Valves 1/2" and 3/4"

14

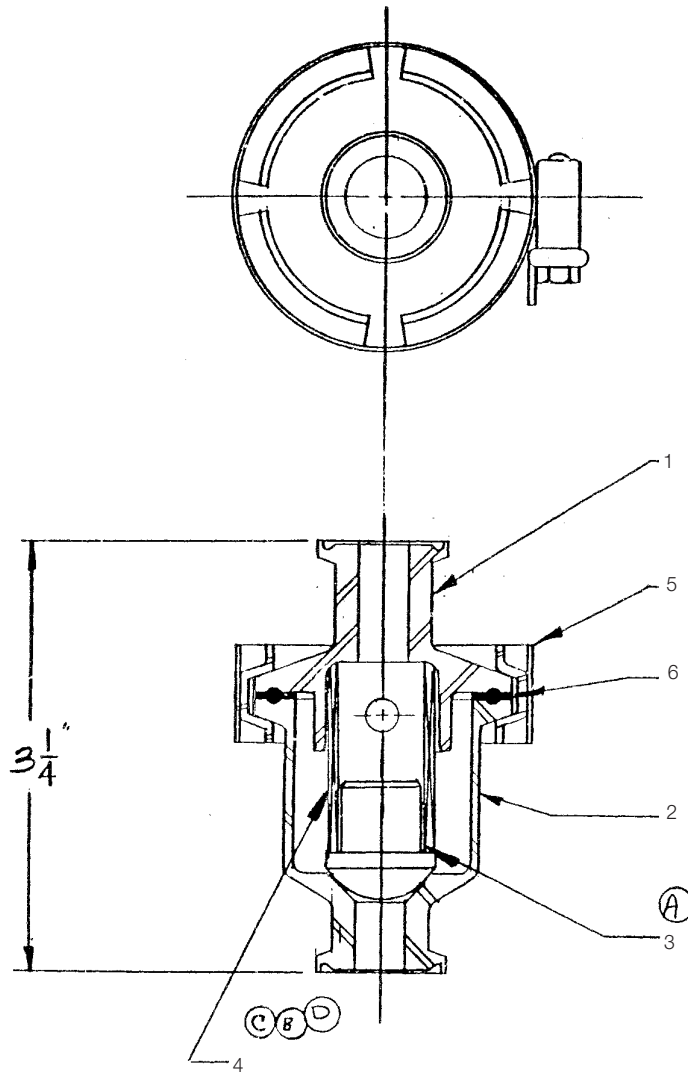


C45MP Check Valves 1/2" and 3/4"

Pos.	Qty.	Denomination	1/2"	3/4"
1	1	Upper Body	620052	620268
2	1	Lower Body	620222	620269
5	1	Clamp	755034	755034
6	1	Gasket Buna	298452	298452
6	1	Gasket EPDM	290044	290044
6	1	Gasket SFY	290022	290022
7	1	Check Ball	620041	620041

C45MPS Check Valves 1/2" and 3/4"

16



C45MPS Check Valves 1/2" and 3/4"

Pos.	Qty.	Denomination	1/2"	3/4"
1	1	Upper Body	620052	620268
2	1	Lower Body	620222	620269
3	1	Plug	750263	750263
4	1	Spring	751030	751030
5	1	Clamp	755034	755034
6	1	Gasket Buna	298452	298452
6	1	Gasket EPDM	290044	290044
6	1	Gasket SFY	290022	290022